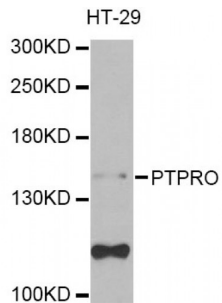


## Protein Tyrosine Phosphatase Receptor Type O (PTPRO) Antibody

Catalogue No.: abx006633



Western blot analysis of extracts of HT-29 cells, using PTPRO Antibody (abx006633) at 1/1000 dilution.

PTPRO Antibody is a Rabbit Polyclonal Antibody against PTPRO.

**Target:** PTPRO

**Reactivity:** Human, Mouse

**Host:** Rabbit

**Clonality:** Polyclonal

**Tested Applications:** WB

**Recommended dilutions:** WB: 1/500 - 1/2000. Optimal dilutions/concentrations should be determined by the end user.

**Purification:** Affinity purified.

**Form:** Liquid

**Isotype:** IgG

**Conjugation:** Unconjugated

**Storage:** Aliquot and store at -20 °C. Avoid repeated freeze/thaw cycles.

**Molecular Weight:** Calculated MW: 43 kDa/47 kDa/67 kDa/134 kDa/138 kDa  
Observed MW: 150 kDa

**Swiss Prot:** [Q16827](#)

**GenID:** [5800](#)

**Gene Symbol:** PTPRO

Abbexa Ltd, Innovation Centre, Cambridge Science Park, Cambridge, CB4 0EY, UK  
Telephone: +44 (0) 1223 755950 - Fax: +44 (0) 1223 755951 - E-Mail: [info@abbexa.com](mailto:info@abbexa.com)

**Concentration:** > 1 mg/ml

**Buffer:** PBS, pH 7.3, 0.02% sodium azide, 50% glycerol.

**Note:** This product is for research use only.