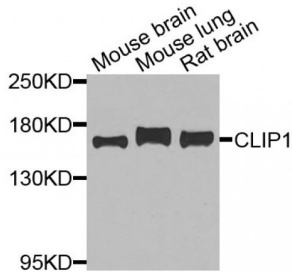


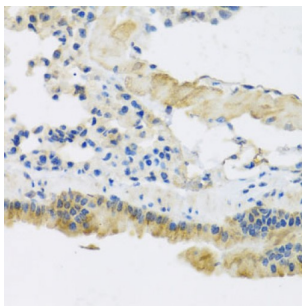
Abbexa Ltd, Innovation Centre, Cambridge Science Park, Cambridge, CB4 0EY, UK
Telephone: +44 (0) 1223 755950 - Fax: +44 (0) 1223 755951 - E-Mail: info@abbexa.com

CAP-Gly Domain Containing Linker Protein 1 (CLIP1) Antibody

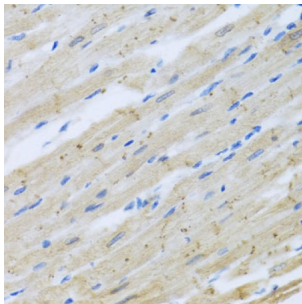
Catalogue No.: abx006518



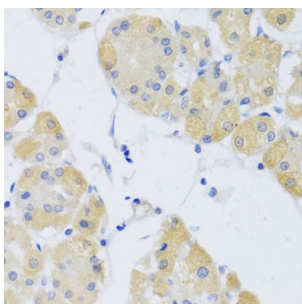
Western blot analysis of extracts of various cell lines, using CLIP1 antibody (abx006518) at 1/1000 dilution.



Immunohistochemistry of paraffin-embedded mouse lung using CLIP1 antibody (abx006518) at dilution of 1/100 (40x lens).



Immunohistochemistry of paraffin-embedded rat heart using CLIP1 antibody (abx006518) at dilution of 1/100 (40x lens).



Immunohistochemistry of paraffin-embedded human stomach using CLIP1 antibody (abx006518) at dilution of 1/100 (40x lens).

CLIP1 Antibody is a Rabbit Polyclonal Antibody against CLIP1.

Target: CLIP1

Reactivity: Human, Mouse, Rat

Host: Rabbit

Abbexa Ltd, Innovation Centre, Cambridge Science Park, Cambridge, CB4 0EY, UK
Telephone: +44 (0) 1223 755950 - Fax: +44 (0) 1223 755951 - E-Mail: info@abbexa.com

Clonality: Polyclonal

Tested Applications: WB, IHC

Recommended dilutions: WB: 1/500 - 1/2000, IHC: 1/50 - 1/200. Optimal dilutions/concentrations should be determined by the end user.

Purification: Affinity purified.

Form: Liquid

Isotype: IgG

Conjugation: Unconjugated

Storage: Aliquot and store at -20 °C. Avoid repeated freeze/thaw cycles.

Molecular Weight: Calculated MW: 156 kDa/160 kDa/162 kDa
Observed MW: 162 kDa

Swiss Prot: [P30622](#)

GeneID: [6249](#)

Gene Symbol: CLIP1

Concentration: > 1 mg/ml

Buffer: PBS, pH 7.3, 0.02% sodium azide, 50% glycerol.

Note: This product is for research use only.