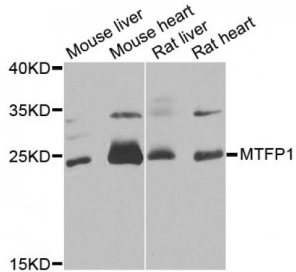
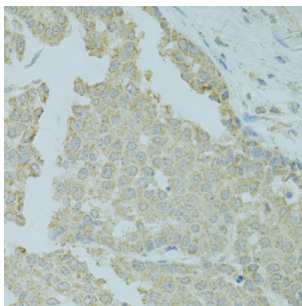


Mitochondrial Fission Process 1 (MTFP1) Antibody

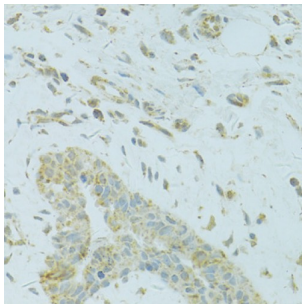
Catalogue No.: abx006426



Western blot analysis of extracts of various cell lines, using MTFP1 antibody (abx006426) at 1/1000 dilution.



Immunohistochemistry of paraffin-embedded human colon carcinoma using MTFP1 antibody (abx006426) at dilution of 1/100 (40x lens).



Immunohistochemistry of paraffin-embedded human breast cancer using MTFP1 antibody (abx006426) at dilution of 1/100 (40x lens).

MTFP1 Antibody is a Rabbit Polyclonal Antibody against MTFP1.

Target: MTFP1

Reactivity: Human, Mouse, Rat

Host: Rabbit

Clonality: Polyclonal

Tested Applications: WB, IHC

Recommended dilutions: WB: 1/500 - 1/2000, IHC: 1/50 - 1/200. Optimal dilutions/concentrations should be determined by the end user.

Purification: Affinity purified.

Abbexa Ltd, Innovation Centre, Cambridge Science Park, Cambridge, CB4 0EY, UK
Telephone: +44 (0) 1223 755950 - Fax: +44 (0) 1223 755951 - E-Mail: info@abbexa.com

| | |
|--------------------------|---|
| Form: | Liquid |
| Isotype: | IgG |
| Conjugation: | Unconjugated |
| Storage: | Aliquot and store at -20 °C. Avoid repeated freeze/thaw cycles. |
| Molecular Weight: | Calculated MW: 14 kDa/18 kDa Observed MW: 25 kDa |
| Swiss Prot: | Q9UDX5 |
| GeneID: | 51537 |
| Gene Symbol: | MTFP1 |
| Concentration: | > 1 mg/ml |
| Buffer: | PBS, pH 7.3, 0.02% sodium azide, 50% glycerol. |
| Note: | This product is for research use only. |