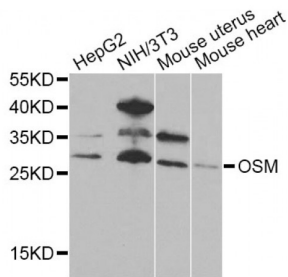


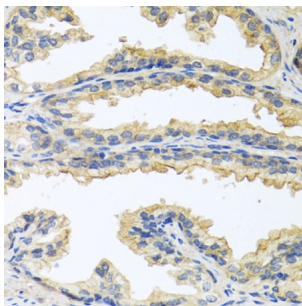
Abbexa Ltd, Innovation Centre, Cambridge Science Park, Cambridge, CB4 0EY, UK
 Telephone: +44 (0) 1223 755950 - Fax: +44 (0) 1223 755951 - E-Mail: info@abbexa.com

Oncostatin M (OSM) Antibody

Catalogue No.: abx006322



Western blot analysis of extracts of various cell lines, using OSM Antibody (abx006322) at 1/1000 dilution.



Immunohistochemistry of paraffin-embedded human prostate using OSM antibody (abx006322) at dilution of 1/100 (40x lens).

OSM Antibody is a Rabbit Polyclonal Antibody against OSM.

Target:	OSM
Reactivity:	Human, Mouse
Host:	Rabbit
Clonality:	Polyclonal
Tested Applications:	WB, IHC
Recommended dilutions:	WB: 1/500 - 1/2000, IHC: 1/50 - 1/100. Optimal dilutions/concentrations should be determined by the end user.
Purification:	Affinity purified.
Form:	Liquid
Isotype:	IgG
Conjugation:	Unconjugated
Storage:	Aliquot and store at -20 °C. Avoid repeated freeze/thaw cycles.

Abbexa Ltd, Innovation Centre, Cambridge Science Park, Cambridge, CB4 0EY, UK
Telephone: +44 (0) 1223 755950 - Fax: +44 (0) 1223 755951 - E-Mail: info@abbexa.com

Molecular Weight: Calculated MW: 28 kDa
Observed MW: 28 kDa

Swiss Prot: [P13725](#)

GeneID: [5008](#)

Gene Symbol: OSM

Concentration: > 1 mg/ml

Buffer: PBS, pH 7.3, 0.02% sodium azide, 50% glycerol.

Note: This product is for research use only.