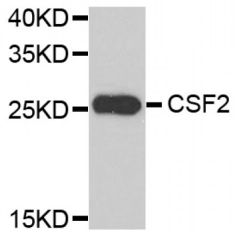


Granulocyte-Macrophage Colony-Stimulating Factor (CSF2) Antibody

Catalogue No.: abx006317

Mouse intestine



Western blot analysis of extracts of mouse intestine, using CSF2 antibody (abx006317) at 1/1000 dilution.

CSF2 Antibody is a Rabbit Polyclonal Antibody against CSF2.

Target: CSF2

Reactivity: Mouse

Host: Rabbit

Clonality: Polyclonal

Tested Applications: WB

Recommended dilutions: WB: 1/500 - 1/2000. Optimal dilutions/concentrations should be determined by the end user.

Purification: Affinity purified.

Form: Liquid

Isotype: IgG

Conjugation: Unconjugated

Storage: Aliquot and store at -20 °C. Avoid repeated freeze/thaw cycles.

Molecular Weight: Calculated MW: 16 kDa
Observed MW: 25 kDa

Swiss Prot: [P04141](#)

GenID: [1437](#)

Gene Symbol: CSF2

Abbexa Ltd, Innovation Centre, Cambridge Science Park, Cambridge, CB4 0EY, UK
Telephone: +44 (0) 1223 755950 - Fax: +44 (0) 1223 755951 - E-Mail: info@abbexa.com

Concentration: > 1 mg/ml

Buffer: PBS, pH 7.3, 0.02% sodium azide, 50% glycerol.

Note: This product is for research use only.