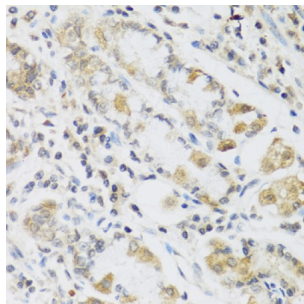


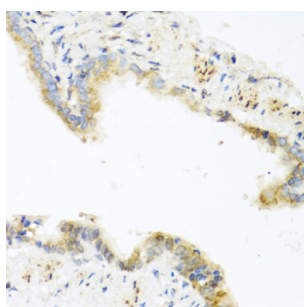
Abbexa Ltd, Innovation Centre, Cambridge Science Park, Cambridge, CB4 0EY, UK
Telephone: +44 (0) 1223 755950 - Fax: +44 (0) 1223 755951 - E-Mail: info@abbexa.com

Resistin (RETN) Antibody

Catalogue No.: abx006281



Immunohistochemistry of paraffin-embedded human stomach using RETN antibody (abx006281) at dilution of 1/100 (40x lens).



Immunohistochemistry of paraffin-embedded mouse lung using RETN antibody (abx006281) at dilution of 1/100 (40x lens).

RETN Antibody is a Rabbit Polyclonal Antibody against RETN.

Target: RETN

Reactivity: Human, Mouse

Host: Rabbit

Clonality: Polyclonal

Tested Applications: WB, IHC

Recommended dilutions: WB: 1/500 - 1/2000, IHC: 1/50 - 1/100. Optimal dilutions/concentrations should be determined by the end user.

Purification: Affinity purified.

Form: Liquid

Isotype: IgG

Conjugation: Unconjugated

Storage: Aliquot and store at -20 °C. Avoid repeated freeze/thaw cycles.

Abbexa Ltd, Innovation Centre, Cambridge Science Park, Cambridge, CB4 0EY, UK
Telephone: +44 (0) 1223 755950 - Fax: +44 (0) 1223 755951 - E-Mail: info@abbexa.com

Molecular Weight: Calculated MW: 8 kDa/11 kDa
Observed MW: Refer to figures

Swiss Prot: [Q9HD89](#)

GeneID: [56729](#)

Gene Symbol: RETN

Concentration: > 1 mg/ml

Buffer: PBS, pH 7.3, 0.02% sodium azide, 50% glycerol.

Note: This product is for research use only.