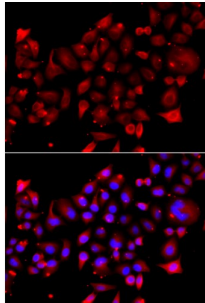


Abbexa Ltd, Innovation Centre, Cambridge Science Park, Cambridge, CB4 0EY, UK
Telephone: +44 (0) 1223 755950 - Fax: +44 (0) 1223 755951 - E-Mail: info@abbexa.com

Ribonucleoside-Diphosphate Reductase Subunit M2 B (RRM2B) Antibody

Catalogue No.: abx006266



Immunofluorescence analysis of A549 cells using RRM2B antibody (abx006266). Blue: DAPI for nuclear staining.

RRM2B Antibody is a Rabbit Polyclonal Antibody against RRM2B.

Target:	RRM2B
Reactivity:	Human, Mouse, Rat
Host:	Rabbit
Clonality:	Polyclonal
Tested Applications:	WB, IF/ICC
Recommended dilutions:	WB: 1/500 - 1/2000, IF/ICC: 1/50 - 1/100. Optimal dilutions/concentrations should be determined by the end user.
Purification:	Affinity purified.
Form:	Liquid
Isotype:	IgG
Conjugation:	Unconjugated
Storage:	Aliquot and store at -20 °C. Avoid repeated freeze/thaw cycles.
Molecular Weight:	Calculated MW: 4 kDa/7 kDa/15 kDa/34 kDa/40 kDa/48 kDa Observed MW: Refer to figures
Swiss Prot:	Q7LG56
GeneID:	50484

Abbexa Ltd, Innovation Centre, Cambridge Science Park, Cambridge, CB4 0EY, UK
Telephone: +44 (0) 1223 755950 - Fax: +44 (0) 1223 755951 - E-Mail: info@abbexa.com

Gene Symbol: RRM2B

Concentration: > 1 mg/ml

Buffer: PBS, pH 7.3, 0.02% sodium azide, 50% glycerol.

Note: This product is for research use only.