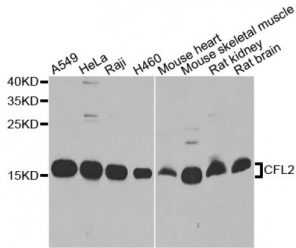


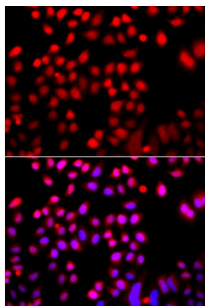
Abbexa Ltd, Innovation Centre, Cambridge Science Park, Cambridge, CB4 0EY, UK
 Telephone: +44 (0) 1223 755950 - Fax: +44 (0) 1223 755951 - E-Mail: info@abbexa.com

Cofilin 2 (CFL2) Antibody

Catalogue No.: abx006263



Western blot analysis of extracts of various cell lines, using CFL2 antibody (abx006263) at 1/1000 dilution.



Immunofluorescence analysis of A549 cells using CFL2 antibody (abx006263). Blue: DAPI for nuclear staining.

CFL2 Antibody is a Rabbit Polyclonal Antibody against CFL2.

- Target:** CFL2
- Reactivity:** Human, Mouse, Rat
- Host:** Rabbit
- Clonality:** Polyclonal
- Tested Applications:** WB, IF/ICC
- Recommended dilutions:** WB: 1/500 - 1/2000, IF/ICC: 1/50 - 1/100. Optimal dilutions/concentrations should be determined by the end user.
- Purification:** Affinity purified.
- Form:** Liquid
- Isotype:** IgG
- Conjugation:** Unconjugated
- Storage:** Aliquot and store at -20 °C. Avoid repeated freeze/thaw cycles.

Abbexa Ltd, Innovation Centre, Cambridge Science Park, Cambridge, CB4 0EY, UK
Telephone: +44 (0) 1223 755950 - Fax: +44 (0) 1223 755951 - E-Mail: info@abbexa.com

Molecular Weight: Calculated MW: 16 kDa/18 kDa
Observed MW: 15 kDa

Swiss Prot: [Q9Y281](#)

GeneID: [1073](#)

Gene Symbol: CFL2

Concentration: > 1 mg/ml

Buffer: PBS, pH 7.3, 0.02% sodium azide, 50% glycerol.

Note: This product is for research use only.