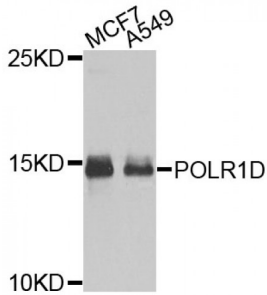


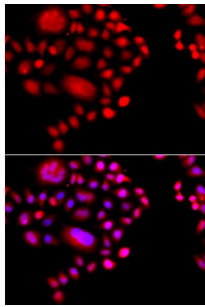
Abbexa Ltd, Innovation Centre, Cambridge Science Park, Cambridge, CB4 0EY, UK
Telephone: +44 (0) 1223 755950 - Fax: +44 (0) 1223 755951 - E-Mail: info@abbexa.com

RNA Polymerase I Subunit D (POLR1D) Antibody

Catalogue No.: abx006253



Western blot analysis of extracts of various cell lines, using POLR1D antibody (abx006253) at 1/1000 dilution.



Immunofluorescence analysis of A549 cells using POLR1D antibody (abx006253). Blue: DAPI for nuclear staining.

POLR1D Antibody is a Rabbit Polyclonal Antibody against POLR1D.

Target: POLR1D

Reactivity: Human

Host: Rabbit

Clonality: Polyclonal

Tested Applications: WB, IF/ICC

Recommended dilutions: WB: 1/500 - 1/2000, IF/ICC: 1/50 - 1/100. Optimal dilutions/concentrations should be determined by the end user.

Purification: Affinity purified.

Form: Liquid

Isotype: IgG

Conjugation: Unconjugated

Storage: Aliquot and store at -20 °C. Avoid repeated freeze/thaw cycles.

Abbexa Ltd, Innovation Centre, Cambridge Science Park, Cambridge, CB4 0EY, UK
Telephone: +44 (0) 1223 755950 - Fax: +44 (0) 1223 755951 - E-Mail: info@abbexa.com

Molecular Weight: Calculated MW: 14 kDa/15 kDa
Observed MW: 15 kDa

Swiss Prot: [Q9Y2S0](#)

GeneID: [51082](#)

Gene Symbol: POLR1D

Concentration: > 1 mg/ml

Buffer: PBS, pH 7.3, 0.02% sodium azide, 50% glycerol.

Note: This product is for research use only.