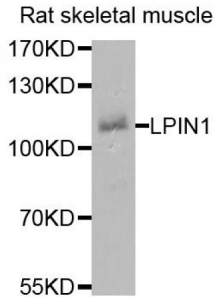


Abbexa Ltd, Innovation Centre, Cambridge Science Park, Cambridge, CB4 0EY, UK
Telephone: +44 (0) 1223 755950 - Fax: +44 (0) 1223 755951 - E-Mail: info@abbexa.com

Phosphatidate Phosphatase LPIN1 (LPIN1) Antibody

Catalogue No.: abx006238



Western blot analysis of extracts of rat skeletal muscle, using LPIN1 antibody (abx006238) at 1/1000 dilution.

LPIN1 Antibody is a Rabbit Polyclonal Antibody against LPIN1.

Target: LPIN1

Reactivity: Rat

Host: Rabbit

Clonality: Polyclonal

Tested Applications: WB

Recommended dilutions: WB: 1/500 - 1/2000. Optimal dilutions/concentrations should be determined by the end user.

Purification: Affinity purified.

Form: Liquid

Isotype: IgG

Conjugation: Unconjugated

Storage: Aliquot and store at -20 °C. Avoid repeated freeze/thaw cycles.

Molecular Weight: Calculated MW: 50 kDa/98 kDa/99-107 kDa
Observed MW: 110 kDa

Swiss Prot: [Q14693](#)

GenID: [23175](#)

Gene Symbol: LPIN1

Abbexa Ltd, Innovation Centre, Cambridge Science Park, Cambridge, CB4 0EY, UK
Telephone: +44 (0) 1223 755950 - Fax: +44 (0) 1223 755951 - E-Mail: info@abbexa.com

Concentration: > 1 mg/ml

Buffer: PBS, pH 7.3, 0.02% sodium azide, 50% glycerol.

Note: This product is for research use only.