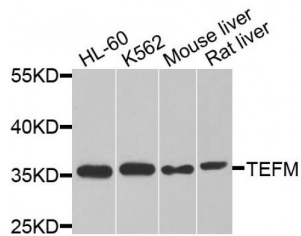


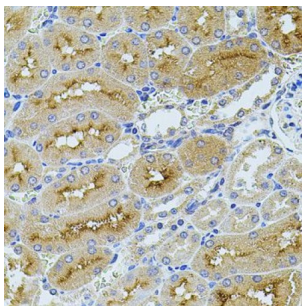
Abbexa Ltd, Innovation Centre, Cambridge Science Park, Cambridge, CB4 0EY, UK
 Telephone: +44 (0) 1223 755950 - Fax: +44 (0) 1223 755951 - E-Mail: info@abbexa.com

Transcription Elongation Factor, Mitochondrial (TEFM) Antibody

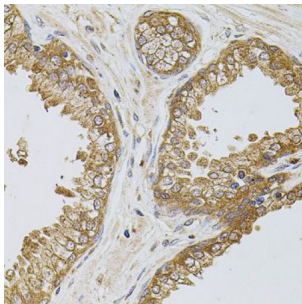
Catalogue No.: abx006170



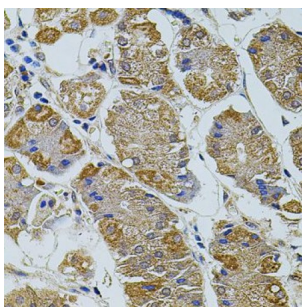
Western blot analysis of extracts of various cell lines, using TEFM antibody (abx006170) at 1/1000 dilution.



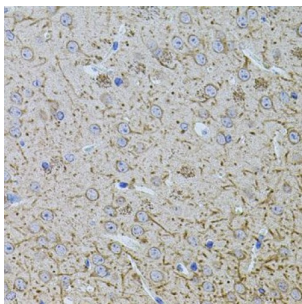
Immunohistochemistry of paraffin-embedded rat kidney using TEFM antibody (abx006170) at dilution of 1/100 (40x lens).



Immunohistochemistry of paraffin-embedded human prostate using TEFM antibody (abx006170) at dilution of 1/100 (40x lens).

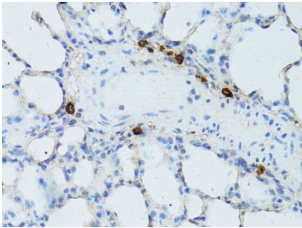


Immunohistochemistry of paraffin-embedded human stomach using TEFM antibody (abx006170) at dilution of 1/100 (40x lens).

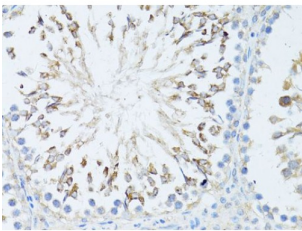


Immunohistochemistry of paraffin-embedded mouse brain using TEFM antibody (abx006170) at dilution of 1/100 (40x lens).

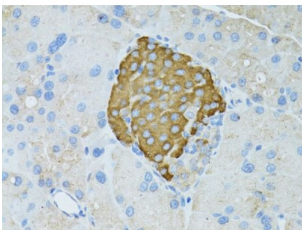
Abbexa Ltd, Innovation Centre, Cambridge Science Park, Cambridge, CB4 0EY, UK
Telephone: +44 (0) 1223 755950 - Fax: +44 (0) 1223 755951 - E-Mail: info@abbexa.com



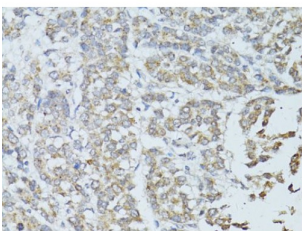
Immunohistochemistry of paraffin-embedded rat lung using TEFM antibody (abx006170) at dilution of 1/100 (40x lens).



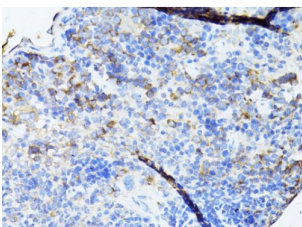
Immunohistochemistry of paraffin-embedded rat testis using TEFM antibody (abx006170) at dilution of 1/100 (40x lens).



Immunohistochemistry of paraffin-embedded rat pancreas using TEFM antibody (abx006170) at dilution of 1/100 (40x lens).



Immunohistochemistry of paraffin-embedded human colon carcinoma using TEFM antibody (abx006170) at dilution of 1/100 (40x lens).



Immunohistochemistry of paraffin-embedded mouse spleen using TEFM antibody (abx006170) at dilution of 1/100 (40x lens).

TEFM Antibody is a Rabbit Polyclonal Antibody against TEFM.

Abbexa Ltd, Innovation Centre, Cambridge Science Park, Cambridge, CB4 0EY, UK
Telephone: +44 (0) 1223 755950 - Fax: +44 (0) 1223 755951 - E-Mail: info@abbexa.com

Target:	TEFM
Reactivity:	Human, Mouse, Rat
Host:	Rabbit
Clonality:	Polyclonal
Tested Applications:	WB, IHC
Recommended dilutions:	WB: 1/500 - 1/2000, IHC: 1/50 - 1/200. Optimal dilutions/concentrations should be determined by the end user.
Purification:	Affinity purified.
Form:	Liquid
Isotype:	IgG
Conjugation:	Unconjugated
Storage:	Aliquot and store at -20 °C. Avoid repeated freeze/thaw cycles.
Molecular Weight:	Calculated MW: 19 kDa/41 kDa Observed MW: 37 kDa
Swiss Prot:	Q96QE5
GeneID:	79736
Gene Symbol:	TEFM
Concentration:	> 1 mg/ml
Buffer:	PBS, pH 7.3, 0.02% sodium azide, 50% glycerol.
Note:	This product is for research use only.