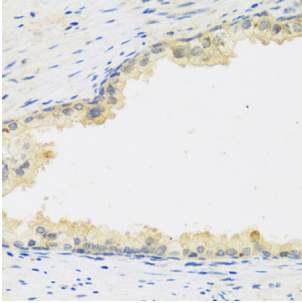


Abbexa Ltd, Innovation Centre, Cambridge Science Park, Cambridge, CB4 0EY, UK
Telephone: +44 (0) 1223 755950 - Fax: +44 (0) 1223 755951 - E-Mail: info@abbexa.com

Leukemia Inhibitory Factor (LIF) Antibody

Catalogue No.: abx005951



Immunohistochemistry of paraffin-embedded human prostate using LIF antibody (abx005951) at dilution of 1/100 (40x lens).

LIF Antibody is a Rabbit Polyclonal Antibody against LIF.

Target: LIF

Reactivity: Human

Host: Rabbit

Clonality: Polyclonal

Tested Applications: IHC

Recommended dilutions: IHC: 1/50 - 1/100. Optimal dilutions/concentrations should be determined by the end user.

Purification: Affinity purified.

Form: Liquid

Isotype: IgG

Conjugation: Unconjugated

Storage: Aliquot and store at -20 °C. Avoid repeated freeze/thaw cycles.

Molecular Weight: Calculated MW: 9 kDa/22 kDa

Swiss Prot: [P15018](#)

GeneID: [3976](#)

Gene Symbol: LIF

Abbexa Ltd, Innovation Centre, Cambridge Science Park, Cambridge, CB4 0EY, UK
Telephone: +44 (0) 1223 755950 - Fax: +44 (0) 1223 755951 - E-Mail: info@abbexa.com

Concentration: > 1 mg/ml

Buffer: PBS, pH 7.3, 0.02% sodium azide, 50% glycerol.

Note: This product is for research use only.