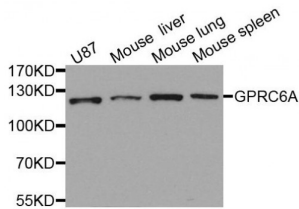


Abbexa Ltd, Innovation Centre, Cambridge Science Park, Cambridge, CB4 0EY, UK
Telephone: +44 (0) 1223 755950 - Fax: +44 (0) 1223 755951 - E-Mail: info@abbexa.com

G-Protein Coupled Receptor Family C Group 6 Member A (GPRC6A) Antibody

Catalogue No.: abx005942



Western blot analysis of extracts of various cell lines, using GPRC6A antibody (abx005942) at 1/1000 dilution.

GPRC6A Antibody is a Rabbit Polyclonal Antibody against GPRC6A.

Target: GPRC6A

Reactivity: Human, Mouse

Host: Rabbit

Clonality: Polyclonal

Tested Applications: WB

Recommended dilutions: WB: 1/500 - 1/2000. Optimal dilutions/concentrations should be determined by the end user.

Purification: Affinity purified.

Form: Liquid

Isotype: IgG

Conjugation: Unconjugated

Storage: Aliquot and store at -20 °C. Avoid repeated freeze/thaw cycles.

Molecular Weight: Calculated MW: 84 kDa/96 kDa/104 kDa
Observed MW: 105 kDa

Swiss Prot: [Q5T6X5](#)

GeneID: [222545](#)

Gene Symbol: GPRC6A

Abbexa Ltd, Innovation Centre, Cambridge Science Park, Cambridge, CB4 0EY, UK
Telephone: +44 (0) 1223 755950 - Fax: +44 (0) 1223 755951 - E-Mail: info@abbexa.com

Concentration: > 1 mg/ml

Buffer: PBS, pH 7.3, 0.02% sodium azide, 50% glycerol.

Note: This product is for research use only.