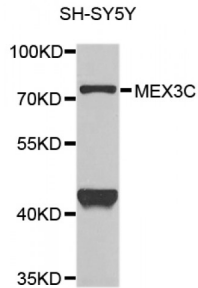


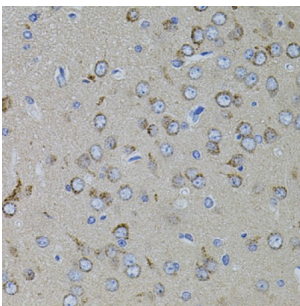
Abbexa Ltd, Innovation Centre, Cambridge Science Park, Cambridge, CB4 0EY, UK
Telephone: +44 (0) 1223 755950 - Fax: +44 (0) 1223 755951 - E-Mail: info@abbexa.com

RING-Type E3 Ubiquitin Transferase MEX3C (Mex3C) Antibody

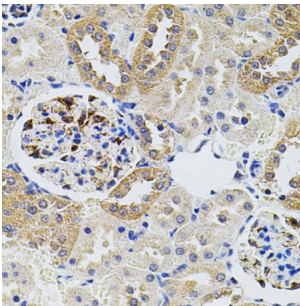
Catalogue No.: abx005820



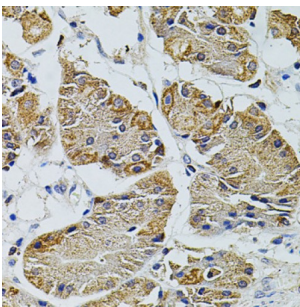
Western blot analysis of extracts of SH-SY5Y cells, using MEX3C antibody (abx005820) at 1/1000 dilution.



Immunohistochemistry of paraffin-embedded rat brain using MEX3C antibody (abx005820) at dilution of 1/100 (40x lens).



Immunohistochemistry of paraffin-embedded rat kidney using MEX3C antibody (abx005820) at dilution of 1/100 (40x lens).



Immunohistochemistry of paraffin-embedded human stomach using MEX3C antibody (abx005820) at dilution of 1/100 (40x lens).

Mex3C Antibody is a Rabbit Polyclonal Antibody against Mex3C.

Target: Mex3C

Reactivity: Human, Rat

Host: Rabbit

Abbexa Ltd, Innovation Centre, Cambridge Science Park, Cambridge, CB4 0EY, UK
Telephone: +44 (0) 1223 755950 - Fax: +44 (0) 1223 755951 - E-Mail: info@abbexa.com

Clonality: Polyclonal

Tested Applications: WB, IHC

Recommended dilutions: WB: 1/500 - 1/2000, IHC: 1/50 - 1/200. Optimal dilutions/concentrations should be determined by the end user.

Purification: Affinity purified.

Form: Liquid

Isotype: IgG

Conjugation: Unconjugated

Storage: Aliquot and store at -20 °C. Avoid repeated freeze/thaw cycles.

Molecular Weight: Calculated MW: 69 kDa
Observed MW: 69 kDa

Swiss Prot: [Q5U5Q3](#)

GeneID: [51320](#)

Gene Symbol: Mex3C

Concentration: > 1 mg/ml

Buffer: PBS, pH 7.3, 0.02% sodium azide, 50% glycerol.

Note: This product is for research use only.