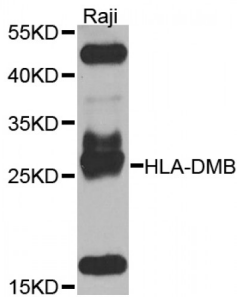


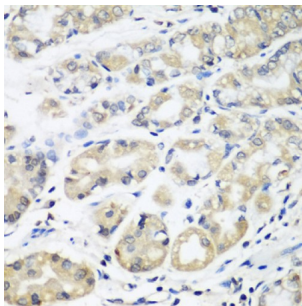
Abbexa Ltd, Innovation Centre, Cambridge Science Park, Cambridge, CB4 0EY, UK
Telephone: +44 (0) 1223 755950 - Fax: +44 (0) 1223 755951 - E-Mail: info@abbexa.com

HLA Class II Histocompatibility Antigen, DM Beta Chain (HLA-DMB) Antibody

Catalogue No.: abx005818



Western blot analysis of extracts of Raji cells, using HLA-DMB antibody (abx005818) at 1/1000 dilution.



Immunohistochemistry of paraffin-embedded human stomach using HLA-DMB antibody (abx005818) at dilution of 1/100 (40x lens).

HLA-DMB Antibody is a Rabbit Polyclonal Antibody against HLA-DMB.

Target: HLA-DMB

Reactivity: Human

Host: Rabbit

Clonality: Polyclonal

Tested Applications: WB, IHC

Recommended dilutions: WB: 1/500 - 1/2000, IHC: 1/50 - 1/100. Optimal dilutions/concentrations should be determined by the end user.

Purification: Affinity purified.

Form: Liquid

Isotype: IgG

Conjugation: Unconjugated

Abbexa Ltd, Innovation Centre, Cambridge Science Park, Cambridge, CB4 0EY, UK
Telephone: +44 (0) 1223 755950 - Fax: +44 (0) 1223 755951 - E-Mail: info@abbexa.com

Storage: Aliquot and store at -20 °C. Avoid repeated freeze/thaw cycles.

Molecular Weight: Calculated MW: 28 kDa
Observed MW: 29 kDa

Swiss Prot: [P28068](#)

GeneID: [3109](#)

Gene Symbol: HLA-DMB

Concentration: > 1 mg/ml

Buffer: PBS, pH 7.3, 0.02% sodium azide, 50% glycerol.

Note: This product is for research use only.