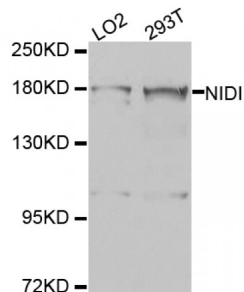


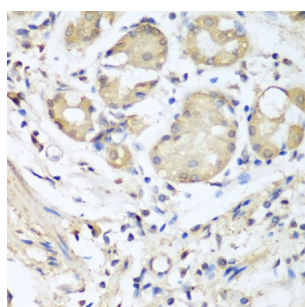
Abbexa Ltd, Innovation Centre, Cambridge Science Park, Cambridge, CB4 0EY, UK  
Telephone: +44 (0) 1223 755950 - Fax: +44 (0) 1223 755951 - E-Mail: info@abbexa.com

### Nidogen 1/Entactin (NID1) Antibody

Catalogue No.: abx005803



Western blot analysis of extracts of various cell lines, using NID1 antibody (abx005803) at 1/1000 dilution.



Immunohistochemistry of paraffin-embedded human stomach using NID1 antibody (abx005803) at dilution of 1/100 (40x lens).

NID1 Antibody is a Rabbit Polyclonal Antibody against NID1.

**Target:** NID1

**Reactivity:** Human

**Host:** Rabbit

**Clonality:** Polyclonal

**Tested Applications:** WB, IHC

**Recommended dilutions:** WB: 1/500 - 1/2000, IHC: 1/50 - 1/100. Optimal dilutions/concentrations should be determined by the end user.

**Purification:** Affinity purified.

**Form:** Liquid

**Isotype:** IgG

**Conjugation:** Unconjugated

**Storage:** Aliquot and store at -20 °C. Avoid repeated freeze/thaw cycles.

Abbexa Ltd, Innovation Centre, Cambridge Science Park, Cambridge, CB4 0EY, UK  
Telephone: +44 (0) 1223 755950 - Fax: +44 (0) 1223 755951 - E-Mail: [info@abbexa.com](mailto:info@abbexa.com)

**Molecular Weight:** Calculated MW: 122 kDa/136 kDa  
Observed MW: 180 kDa

**Swiss Prot:** [P14543](#)

**GeneID:** [4811](#)

**Gene Symbol:** NID1

**Concentration:** > 1 mg/ml

**Buffer:** PBS, pH 7.3, 0.02% sodium azide, 50% glycerol.

**Note:** This product is for research use only.