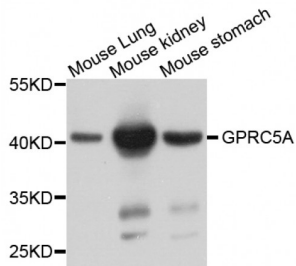


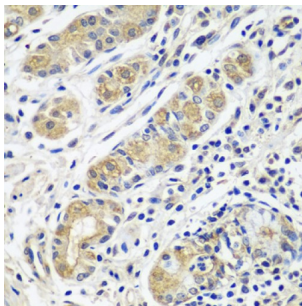
Abbexa Ltd, Innovation Centre, Cambridge Science Park, Cambridge, CB4 0EY, UK
Telephone: +44 (0) 1223 755950 - Fax: +44 (0) 1223 755951 - E-Mail: info@abbexa.com

G Protein Coupled Receptor, Family C, Group 5, Member A (GPRC5A) Antibody

Catalogue No.: abx005719



Western blot analysis of extracts of various cell lines, using GPRC5A antibody (abx005719) at 1/1000 dilution.



Immunohistochemistry of paraffin-embedded human stomach using GPRC5A antibody (abx005719) at dilution of 1/100 (40x lens).

GPRC5A Antibody is a Rabbit Polyclonal Antibody against GPRC5A.

Target: GPRC5A

Reactivity: Human, Mouse

Host: Rabbit

Clonality: Polyclonal

Tested Applications: WB, IHC

Recommended dilutions: WB: 1/500 - 1/2000, IHC: 1/50 - 1/100. Optimal dilutions/concentrations should be determined by the end user.

Purification: Affinity purified.

Form: Liquid

Isotype: IgG

Conjugation: Unconjugated

Abbexa Ltd, Innovation Centre, Cambridge Science Park, Cambridge, CB4 0EY, UK
Telephone: +44 (0) 1223 755950 - Fax: +44 (0) 1223 755951 - E-Mail: info@abbexa.com

Storage: Aliquot and store at -20 °C. Avoid repeated freeze/thaw cycles.

Molecular Weight: Calculated MW: 40 kDa
Observed MW: 40 kDa

Swiss Prot: [Q8NFJ5](#)

GeneID: [9052](#)

Gene Symbol: GPRC5A

Concentration: 3.85 mg/ml

Buffer: PBS, pH 7.3, 0.02% sodium azide, 50% glycerol.

Note: This product is for research use only.