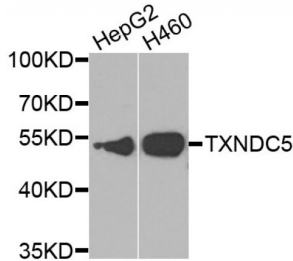
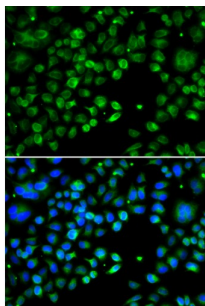


## Thioredoxin Domain-Containing Protein 5 (TXNDC5) Antibody

Catalogue No.: abx005522



Western blot analysis of extracts of various cell lines, using TXNDC5 antibody (abx005522) at 1/1000 dilution.



Immunofluorescence analysis of MCF-7 cells using TXNDC5 antibody (abx005522). Blue: DAPI for nuclear staining.

TXNDC5 Antibody is a Rabbit Polyclonal antibody against TXNDC5. This gene encodes a protein-disulfide isomerase. Its expression is induced by hypoxia and its role may be to protect hypoxic cells from apoptosis. Alternative splicing results in multiple transcript variants. Read-through transcription also exists between this gene and the neighboring upstream MUTED (muted homolog) gene.

**Target:** TXNDC5

**Reactivity:** Human

**Host:** Rabbit

**Clonality:** Polyclonal

**Tested Applications:** WB, IF/ICC

**Recommended dilutions:** WB: 1/500 - 1/2000, IF/ICC: 1/50 - 1/100. Optimal dilutions/concentrations should be determined by the end user.

**Immunogen:** Recombinant protein of human TXNDC5.

**Purification:** Affinity purified.

**Form:** Liquid

Abbexa Ltd, Innovation Centre, Cambridge Science Park, Cambridge, CB4 0EY, UK  
Telephone: +44 (0) 1223 755950 - Fax: +44 (0) 1223 755951 - E-Mail: [info@abbexa.com](mailto:info@abbexa.com)

<b>Isotype:</b>	IgG
<b>Conjugation:</b>	Unconjugated
<b>Storage:</b>	Aliquot and store at -20 °C. Avoid repeated freeze/thaw cycles.
<b>Molecular Weight:</b>	Calculated MW: 36 kDa/47 kDa Observed MW: 48 kDa
<b>Swiss Prot:</b>	<a href="#">Q8NBS9</a>
<b>GeneID:</b>	<a href="#">81567</a>
<b>Gene Symbol:</b>	TXNDC5
<b>Concentration:</b>	> 1 mg/ml
<b>Buffer:</b>	PBS, pH 7.3, 0.02% sodium azide, 50% glycerol.
<b>Note:</b>	This product is for research use only.