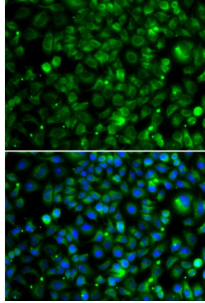


Trimethyllysine Dioxygenase, Mitochondrial (TMLHE) Antibody

Catalogue No.: abx005519



Immunofluorescence analysis of MCF-7 cells using TMLHE antibody (abx005519). Blue: DAPI for nuclear staining.

TMLHE Antibody is a Rabbit Polyclonal antibody against TMLHE. This gene encodes the protein trimethyllysine dioxygenase which is the first enzyme in the carnitine biosynthesis pathway. Carnitine play an essential role in the transport of activated fatty acids across the inner mitochondrial membrane. The encoded protein converts trimethyllysine into hydroxytrimethyllysine. A pseudogene of this gene is found on chromosome X. Alternate splicing results in multiple transcript variants.

Target: TMLHE**Reactivity:** Human**Host:** Rabbit**Clonality:** Polyclonal**Tested Applications:** IF/ICC**Recommended dilutions:** IF/ICC: 1/50 - 1/100. Optimal dilutions/concentrations should be determined by the end user.**Immunogen:** Recombinant protein of human TMLHE.**Purification:** Affinity purified.**Form:** Liquid**Isotype:** IgG**Conjugation:** Unconjugated**Storage:** Aliquot and store at -20 °C. Avoid repeated freeze/thaw cycles.**Molecular Weight:** Calculated MW: 38 kDa/41 kDa/42 kDa/44 kDa/46 kDa/49 kDa/50 kDa**Swiss Prot:** [Q9NVH6](#)

Abbexa Ltd, Innovation Centre, Cambridge Science Park, Cambridge, CB4 0EY, UK
Telephone: +44 (0) 1223 755950 - Fax: +44 (0) 1223 755951 - E-Mail: info@abbexa.com

GeneID: [55217](#)

Gene Symbol: TMLHE

Concentration: > 1 mg/ml

Buffer: PBS, pH 7.3, 0.02% sodium azide, 50% glycerol.

Note: This product is for research use only.