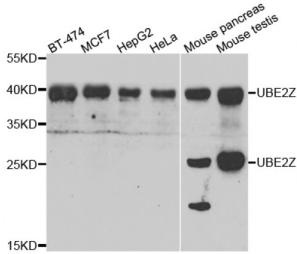


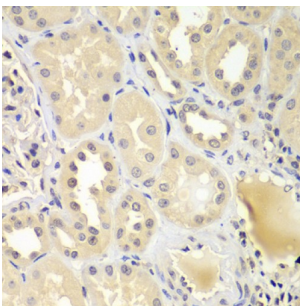
Abbexa Ltd, Innovation Centre, Cambridge Science Park, Cambridge, CB4 0EY, UK  
 Telephone: +44 (0) 1223 755950 - Fax: +44 (0) 1223 755951 - E-Mail: info@abbexa.com

## Ubiquitin Conjugating Enzyme E2 Z (UBE2Z) Antibody

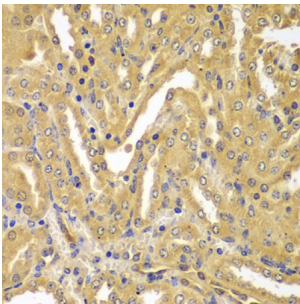
Catalogue No.: abx005453



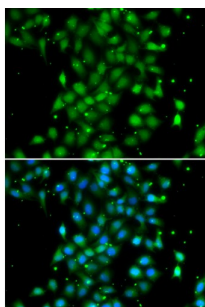
Western blot analysis of extracts of various cell lines, using UBE2Z antibody (abx005453) at 1/1000 dilution.



Immunohistochemistry of paraffin-embedded human kidney using UBE2Z antibody (abx005453) at dilution of 1/100 (40x lens).



Immunohistochemistry of paraffin-embedded mouse kidney using UBE2Z antibody (abx005453) at dilution of 1/100 (40x lens).



Immunofluorescence analysis of MCF-7 cells using UBE2Z antibody (abx005453). Blue: DAPI for nuclear staining.

UBE2Z Antibody is a Rabbit Polyclonal antibody against UBE2Z. This gene encodes an enzyme which ubiquitinates proteins which participate in signaling pathways and apoptosis.

**Target:** UBE2Z

**Reactivity:** Human, Mouse

Abbexa Ltd, Innovation Centre, Cambridge Science Park, Cambridge, CB4 0EY, UK  
Telephone: +44 (0) 1223 755950 - Fax: +44 (0) 1223 755951 - E-Mail: info@abbexa.com

<b>Host:</b>	Rabbit
<b>Clonality:</b>	Polyclonal
<b>Tested Applications:</b>	WB, IHC, IF/ICC
<b>Recommended dilutions:</b>	WB: 1/500 - 1/2000, IHC: 1/50 - 1/200, IF/ICC: 1/50 - 1/100. Optimal dilutions/concentrations should be determined by the end user.
<b>Immunogen:</b>	Recombinant protein of human UBE2Z.
<b>Purification:</b>	Affinity purified.
<b>Form:</b>	Liquid
<b>Isotype:</b>	IgG
<b>Conjugation:</b>	Unconjugated
<b>Storage:</b>	Aliquot and store at -20 °C. Avoid repeated freeze/thaw cycles.
<b>Molecular Weight:</b>	Calculated MW: 28 kDa/38 kDa Observed MW: 25 kDa, 39 kDa
<b>Swiss Prot:</b>	<a href="#">Q9H832</a>
<b>GeneID:</b>	<a href="#">65264</a>
<b>Gene Symbol:</b>	UBE2Z
<b>Concentration:</b>	> 1 mg/ml
<b>Buffer:</b>	PBS, pH 7.3, 0.02% sodium azide, 50% glycerol.
<b>Note:</b>	This product is for research use only.