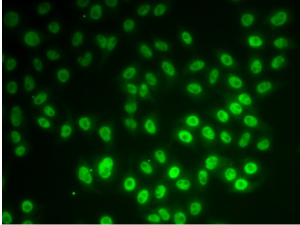


**Small Nuclear Ribonucleoprotein Polypeptide D1 (SNRPD1) Antibody**

Catalogue No.: abx005447



Immunofluorescence analysis of MCF-7 cells using SNRPD1 antibody (abx005447).

SNRPD1 Antibody is a Rabbit Polyclonal antibody against SNRPD1. This gene encodes a small nuclear ribonucleoprotein that belongs to the SNRNP core protein family. The protein may act as a charged protein scaffold to promote SNRNP assembly or strengthen SNRNP-SNRNP interactions through nonspecific electrostatic contacts with RNA. Two transcript variants encoding different isoforms have been found for this gene.

**Target:** SNRPD1**Reactivity:** Human**Host:** Rabbit**Clonality:** Polyclonal**Tested Applications:** IF/ICC**Recommended dilutions:** IF/ICC: 1/50 - 1/100. Optimal dilutions/concentrations should be determined by the end user.**Immunogen:** Recombinant protein of human SNRPD1.**Purification:** Affinity purified.**Form:** Liquid**Isotype:** IgG**Conjugation:** Unconjugated**Storage:** Aliquot and store at -20 °C. Avoid repeated freeze/thaw cycles.**Molecular Weight:** Calculated MW: 13 kDa**Swiss Prot:** [P62314](#)

Abbexa Ltd, Innovation Centre, Cambridge Science Park, Cambridge, CB4 0EY, UK  
Telephone: +44 (0) 1223 755950 - Fax: +44 (0) 1223 755951 - E-Mail: info@abbexa.com

**GeneID:** [6632](#)

**Gene Symbol:** SNRPD1

**Concentration:** > 1 mg/ml

**Buffer:** PBS, pH 7.3, 0.02% sodium azide, 50% glycerol.

**Note:** This product is for research use only.