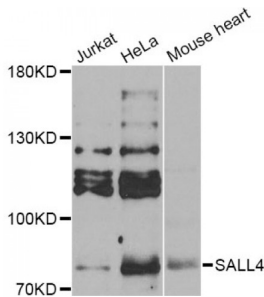


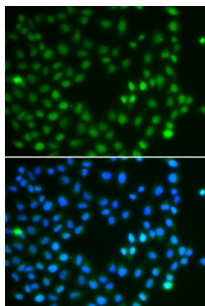
Abbexa Ltd, Innovation Centre, Cambridge Science Park, Cambridge, CB4 0EY, UK
Telephone: +44 (0) 1223 755950 - Fax: +44 (0) 1223 755951 - E-Mail: info@abbexa.com

Sal-Like Protein 4 (SALL4) Antibody

Catalogue No.: abx005379



Western blot analysis of extracts of various cell lines, using SALL4 Antibody (abx005379) at 1/1000 dilution.



Immunofluorescence analysis of A549 cells using SALL4 antibody (abx005379). Blue: DAPI for nuclear staining.

SALL4 Antibody is a Rabbit Polyclonal antibody against SALL4. The protein encoded by this gene may be a zinc finger transcription factor. Defects in this gene are a cause of Duane-radial ray syndrome (DRRS).

Target: SALL4

Reactivity: Human, Mouse

Host: Rabbit

Clonality: Polyclonal

Tested Applications: WB, IF/ICC

Recommended dilutions: WB: 1/500 - 1/2000, IF/ICC: 1/50 - 1/100. Optimal dilutions/concentrations should be determined by the end user.

Immunogen: Recombinant protein of human SALL4.

Purification: Affinity purified.

Form: Liquid

Isotype: IgG

Abbexa Ltd, Innovation Centre, Cambridge Science Park, Cambridge, CB4 0EY, UK
Telephone: +44 (0) 1223 755950 - Fax: +44 (0) 1223 755951 - E-Mail: info@abbexa.com

Conjugation:	Unconjugated
Storage:	Aliquot and store at -20 °C. Avoid repeated freeze/thaw cycles.
Molecular Weight:	Calculated MW: 65 kDa/112 kDa Observed MW: 112 kDa
Swiss Prot:	Q9UJQ4
GeneID:	57167
Gene Symbol:	SALL4
Concentration:	> 1 mg/ml
Buffer:	PBS, pH 7.3, 0.02% sodium azide, 50% glycerol.
Note:	This product is for research use only.