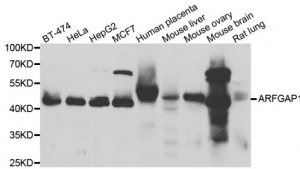


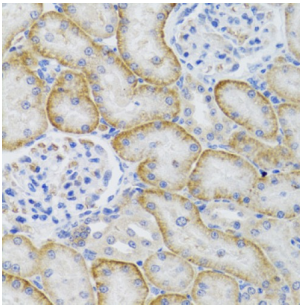
Abbexa Ltd, Innovation Centre, Cambridge Science Park, Cambridge, CB4 0EY, UK
 Telephone: +44 (0) 1223 755950 - Fax: +44 (0) 1223 755951 - E-Mail: info@abbexa.com

ADP-Ribosylation Factor GTPase Activating Protein 1 (ARFGAP1) Antibody

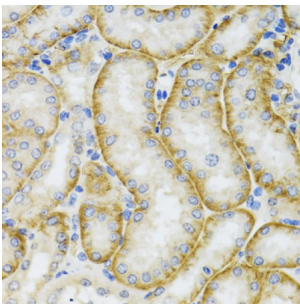
Catalogue No.: abx005376



Western blot analysis of extracts of various cell lines, using ARFGAP1 antibody (abx005376) at 1/1000 dilution.



Immunohistochemistry of paraffin-embedded rat kidney using ARFGAP1 antibody (abx005376) at dilution of 1/100 (40x lens).



Immunohistochemistry of paraffin-embedded mouse kidney using ARFGAP1 antibody (abx005376) at dilution of 1/100 (40x lens).

ARFGAP1 Antibody is a Rabbit Polyclonal antibody against ARFGAP1. The protein encoded by this gene is a GTPase-activating protein, which associates with the Golgi apparatus and which interacts with ADP-ribosylation factor 1. The encoded protein promotes hydrolysis of ADP-ribosylation factor 1-bound GTP and is required for the dissociation of coat proteins from Golgi-derived membranes and vesicles. Dissociation of the coat proteins is required for the fusion of these vesicles with target compartments. The activity of this protein is stimulated by phosphoinositides and inhibited by phosphatidylcholine. Alternative splicing results in multiple transcript variants.

Target: ARFGAP1

Reactivity: Human, Mouse, Rat

Host: Rabbit

Clonality: Polyclonal

Abbexa Ltd, Innovation Centre, Cambridge Science Park, Cambridge, CB4 0EY, UK
Telephone: +44 (0) 1223 755950 - Fax: +44 (0) 1223 755951 - E-Mail: info@abbexa.com

Tested Applications: WB, IHC, IF/ICC

Recommended dilutions: WB: 1/500 - 1/2000, IHC: 1/50 - 1/200, IF/ICC: 1/50 - 1/100. Optimal dilutions/concentrations should be determined by the end user.

Immunogen: Recombinant protein of human ARFGAP1.

Purification: Affinity purified.

Form: Liquid

Isotype: IgG

Conjugation: Unconjugated

Storage: Aliquot and store at -20 °C. Avoid repeated freeze/thaw cycles.

Molecular Weight: Calculated MW: 31 kDa/39 kDa/44 kDa/45 kDa
Observed MW: 45 kDa

Swiss Prot: [Q8N6T3](#)

GeneID: [55738](#)

Gene Symbol: ARFGAP1

Concentration: > 1 mg/ml

Buffer: PBS, pH 7.3, 0.02% sodium azide, 50% glycerol.

Note: This product is for research use only.