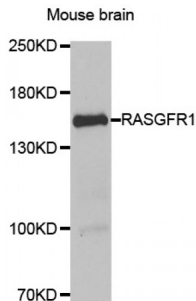


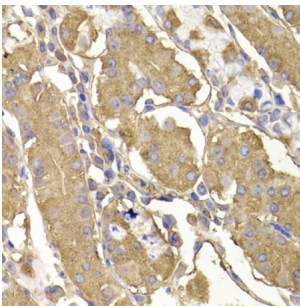
Abbexa Ltd, Innovation Centre, Cambridge Science Park, Cambridge, CB4 0EY, UK
 Telephone: +44 (0) 1223 755950 - Fax: +44 (0) 1223 755951 - E-Mail: info@abbexa.com

Ras-Specific Guanine Nucleotide-Releasing Factor 1 (RASGRF1) Antibody

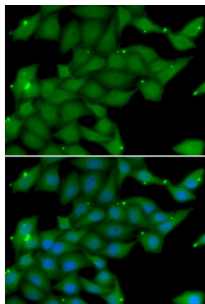
Catalogue No.: abx005283



Western blot analysis of extracts of mouse brain, using RASGRF1 antibody (abx005283) at 1/1000 dilution.



Immunohistochemistry of paraffin-embedded human stomach using RASGRF1 antibody (abx005283) at dilution of 1/100 (40x lens).



Immunofluorescence analysis of U2OS cells using RASGRF1 antibody (abx005283). Blue: DAPI for nuclear staining.

RASGRF1 Antibody is a Rabbit Polyclonal antibody against RASGRF1. The protein encoded by this gene is a guanine nucleotide exchange factor (GEF) similar to the *Saccharomyces cerevisiae* CDC25 gene product. Functional analysis has demonstrated that this protein stimulates the dissociation of GDP from RAS protein. The studies of the similar gene in mouse suggested that the Ras-GEF activity of this protein in brain can be activated by Ca²⁺ influx, muscarinic receptors, and G protein beta-gamma subunit. Mouse studies also indicated that the Ras-GEF signaling pathway mediated by this protein may be important for long-term memory. Alternatively spliced transcript variants encoding distinct isoforms have been reported.

Target:	RASGRF1
Reactivity:	Human, Mouse
Host:	Rabbit
Clonality:	Polyclonal

Abbexa Ltd, Innovation Centre, Cambridge Science Park, Cambridge, CB4 0EY, UK
Telephone: +44 (0) 1223 755950 - Fax: +44 (0) 1223 755951 - E-Mail: info@abbexa.com

Tested Applications: WB, IHC, IF/ICC

Recommended dilutions: WB: 1/500 - 1/2000, IHC: 1/50 - 1/200, IF/ICC: 1/50 - 1/100. Optimal dilutions/concentrations should be determined by the end user.

Immunogen: Recombinant protein of human RASGRF1.

Purification: Affinity purified.

Form: Liquid

Isotype: IgG

Conjugation: Unconjugated

Storage: Aliquot and store at -20 °C. Avoid repeated freeze/thaw cycles.

Molecular Weight: Calculated MW: 55 kDa/143 kDa/145 kDa
Observed MW: 145 kDa

Swiss Prot: [Q13972](#)

GeneID: [5923](#)

Gene Symbol: RASGRF1

Concentration: > 1 mg/ml

Buffer: PBS, pH 7.3, 0.02% sodium azide, 50% glycerol.

Note: This product is for research use only.