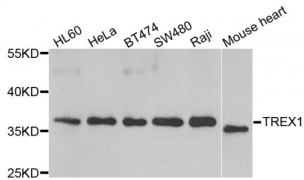


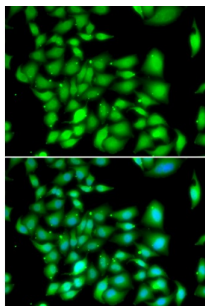
Abbexa Ltd, Innovation Centre, Cambridge Science Park, Cambridge, CB4 0EY, UK
 Telephone: +44 (0) 1223 755950 - Fax: +44 (0) 1223 755951 - E-Mail: info@abbexa.com

Three Prime Repair Exonuclease 1 (TREX1) Antibody

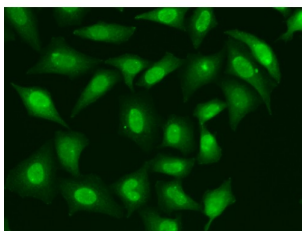
Catalogue No.: abx005200



Western blot analysis of extracts of various cell lines, using TREX1 antibody (abx005200) at 1/1000 dilution.



Immunofluorescence analysis of A549 cells using TREX1 antibody (abx005200). Blue: DAPI for nuclear staining.



Immunofluorescence analysis of HeLa cells using TREX1 antibody (abx005200).

TREX1 Antibody is a Rabbit Polyclonal antibody against TREX1. This gene encodes a nuclear protein with 3' exonuclease activity. The encoded protein may play a role in DNA repair and serve as a proofreading function for DNA polymerase. Mutations in this gene result in Aicardi-Goutieres syndrome, chilblain lupus, Cree encephalitis, and other diseases of the immune system. Alternative splicing results in multiple transcript variants.

Target:	TREX1
Reactivity:	Human, Mouse
Host:	Rabbit
Clonality:	Polyclonal
Tested Applications:	WB, IF/ICC

Abbexa Ltd, Innovation Centre, Cambridge Science Park, Cambridge, CB4 0EY, UK
Telephone: +44 (0) 1223 755950 - Fax: +44 (0) 1223 755951 - E-Mail: info@abbexa.com

Recommended dilutions: WB: 1/500 - 1/2000, IF/ICC: 1/50 - 1/200. Optimal dilutions/concentrations should be determined by the end user.

Immunogen: Recombinant protein of human TREX1.

Purification: Affinity purified.

Form: Liquid

Isotype: IgG

Conjugation: Unconjugated

Storage: Aliquot and store at -20 °C. Avoid repeated freeze/thaw cycles.

Molecular Weight: Calculated MW: 32 kDa/33 kDa/38 kDa
Observed MW: 37 kDa

Swiss Prot: [Q9NSU2](#)

GeneID: [11277](#)

Gene Symbol: TREX1

Concentration: > 1 mg/ml

Buffer: PBS, pH 7.3, 0.02% sodium azide, 50% glycerol.

Note: This product is for research use only.