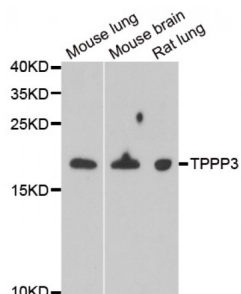


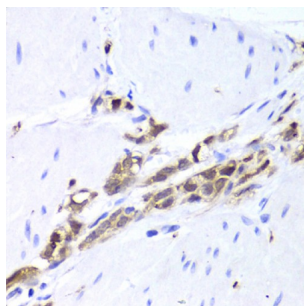
Abbexa Ltd, Innovation Centre, Cambridge Science Park, Cambridge, CB4 0EY, UK
 Telephone: +44 (0) 1223 755950 - Fax: +44 (0) 1223 755951 - E-Mail: info@abbexa.com

Tubulin Polymerization-Promoting Protein Family Member 3 (TPPP3) Antibody

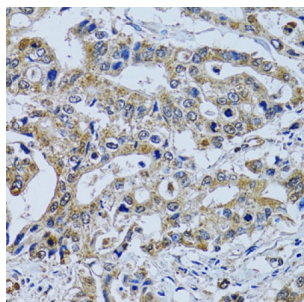
Catalogue No.: abx005197



Western blot analysis of extracts of various cell lines, using TPPP3 antibody (abx005197) at 1/1000 dilution.



Immunohistochemistry of paraffin-embedded human gastric cancer using TPPP3 antibody (abx005197) at dilution of 1/100 (40x lens).



Immunohistochemistry of paraffin-embedded human colon carcinoma using TPPP3 antibody (abx005197) at dilution of 1/100 (40x lens).

TPPP3 Antibody is a Rabbit Polyclonal antibody against TPPP3.

Target: TPPP3

Reactivity: Human, Mouse, Rat

Host: Rabbit

Clonality: Polyclonal

Tested Applications: WB, IHC

Recommended dilutions: WB: 1/500 - 1/2000, IHC: 1/50 - 1/200. Optimal dilutions/concentrations should be determined by the end user.

Abbexa Ltd, Innovation Centre, Cambridge Science Park, Cambridge, CB4 0EY, UK
Telephone: +44 (0) 1223 755950 - Fax: +44 (0) 1223 755951 - E-Mail: info@abbexa.com

Immunogen:	Recombinant protein of human TPPP3.
Purification:	Affinity purified.
Form:	Liquid
Isotype:	IgG
Conjugation:	Unconjugated
Storage:	Aliquot and store at -20 °C. Avoid repeated freeze/thaw cycles.
Molecular Weight:	Calculated MW: 18 kDa Observed MW: 19 kDa
Swiss Prot:	Q9BW30
GeneID:	51673
Gene Symbol:	TPPP3
Concentration:	> 1 mg/ml
Buffer:	PBS, pH 7.3, 0.02% sodium azide, 50% glycerol.
Note:	This product is for research use only.