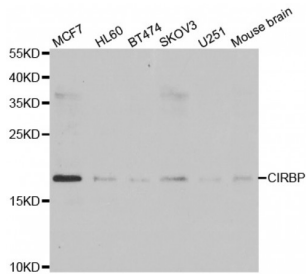


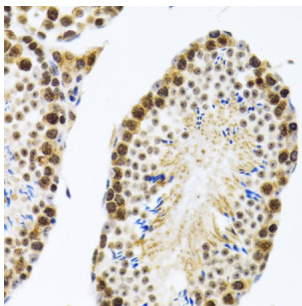
Abbexa Ltd, Innovation Centre, Cambridge Science Park, Cambridge, CB4 0EY, UK
 Telephone: +44 (0) 1223 755950 - Fax: +44 (0) 1223 755951 - E-Mail: info@abbexa.com

Cold-Inducible RNA-Binding Protein (CIRBP) Antibody

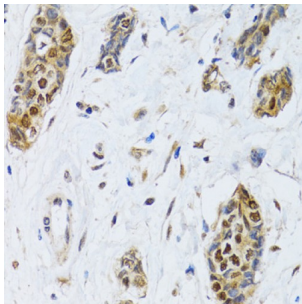
Catalogue No.: abx005033



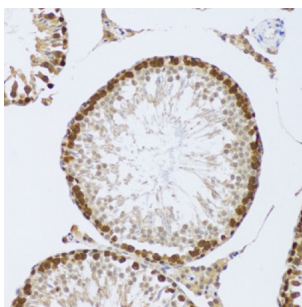
Western blot analysis of extracts of various cell lines, using CIRBP antibody (abx005033) at 1/1000 dilution.



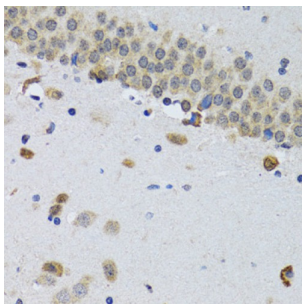
Immunohistochemistry of paraffin-embedded rat testis using CIRBP antibody (abx005033) at dilution of 1/100 (40x lens).



Immunohistochemistry of paraffin-embedded human breast cancer using CIRBP antibody (abx005033) at dilution of 1/100 (40x lens).

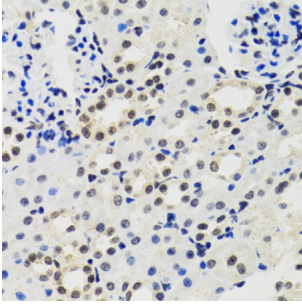


Immunohistochemistry of paraffin-embedded mouse testis using CIRBP antibody (abx005033) at dilution of 1/100 (20x lens).

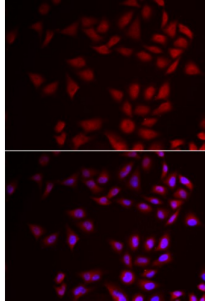


Immunohistochemistry of paraffin-embedded mouse brain using CIRBP antibody (abx005033) at dilution of 1/100 (40x lens).

Abbexa Ltd, Innovation Centre, Cambridge Science Park, Cambridge, CB4 0EY, UK
Telephone: +44 (0) 1223 755950 - Fax: +44 (0) 1223 755951 - E-Mail: info@abbexa.com



Immunohistochemistry of paraffin-embedded mouse kidney using CIRBP antibody (abx005033) at dilution of 1/100 (40x lens).



Immunofluorescence analysis of HeLa cells using CIRBP antibody (abx005033). Blue: DAPI for nuclear staining.

CIRBP Antibody is a Rabbit Polyclonal antibody against CIRBP.

Target: CIRBP

Reactivity: Human, Mouse, Rat

Host: Rabbit

Clonality: Polyclonal

Tested Applications: WB, IHC, IF/ICC

Recommended dilutions: WB: 1/500 - 1/2000, IHC: 1/50 - 1/100, IF/ICC: 1/10 - 1/100. Optimal dilutions/concentrations should be determined by the end user.

Immunogen: Recombinant protein of human CIRBP.

Purification: Affinity purified.

Form: Liquid

Isotype: IgG

Conjugation: Unconjugated

Storage: Aliquot and store at -20 °C. Avoid repeated freeze/thaw cycles.

Abbexa Ltd, Innovation Centre, Cambridge Science Park, Cambridge, CB4 0EY, UK
Telephone: +44 (0) 1223 755950 - Fax: +44 (0) 1223 755951 - E-Mail: info@abbexa.com

Molecular Weight: Calculated MW: 18 kDa/26 kDa/28 kDa
Observed MW: 18 kDa

Swiss Prot: [Q14011](#)

GeneID: [1153](#)

Gene Symbol: CIRBP

Concentration: > 1 mg/ml

Buffer: PBS, pH 7.3, 0.02% sodium azide, 50% glycerol.

Note: This product is for research use only.