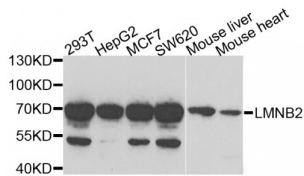


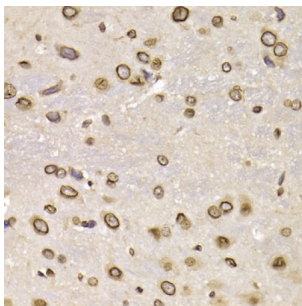
Abbexa Ltd, Innovation Centre, Cambridge Science Park, Cambridge, CB4 0EY, UK  
 Telephone: +44 (0) 1223 755950 - Fax: +44 (0) 1223 755951 - E-Mail: info@abbexa.com

## Lamin-B2 (LMNB2) Antibody

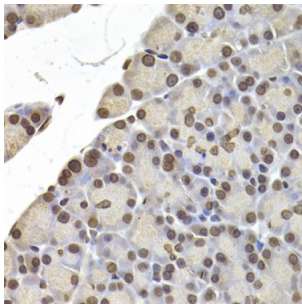
Catalogue No.: abx004970



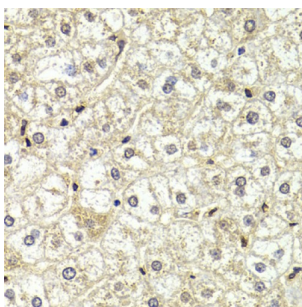
Western blot analysis of extracts of various cell lines, using LMNB2 antibody (abx004970) at 1/1000 dilution.



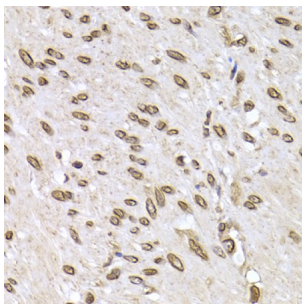
Immunohistochemistry of paraffin-embedded rat brain using LMNB2 Antibody (abx004970) at dilution of 1/200 (40x lens).



Immunohistochemistry of paraffin-embedded rat pancreas using LMNB2 Antibody (abx004970) at dilution of 1/200 (40x lens).

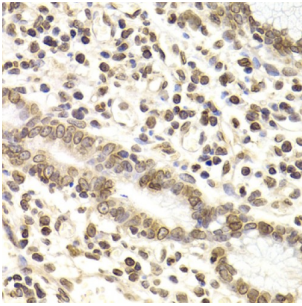


Immunohistochemistry of paraffin-embedded human liver injury using LMNB2 Antibody (abx004970) at dilution of 1/200 (40x lens).

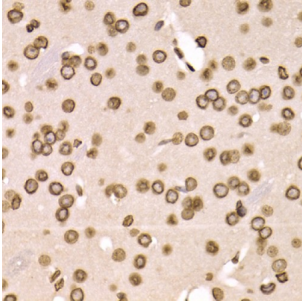


Immunohistochemistry of paraffin-embedded human colon carcinoma using LMNB2 Antibody (abx004970) at dilution of 1/200 (40x lens).

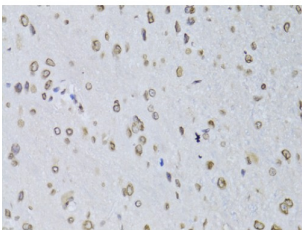
Abbexa Ltd, Innovation Centre, Cambridge Science Park, Cambridge, CB4 0EY, UK  
Telephone: +44 (0) 1223 755950 - Fax: +44 (0) 1223 755951 - E-Mail: info@abbexa.com



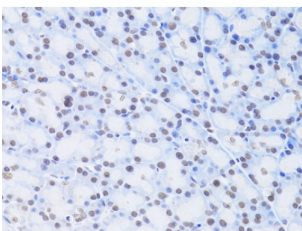
Immunohistochemistry of paraffin-embedded human gastric cancer using LMNB2 Antibody (abx004970) at dilution of 1/200 (40x lens).



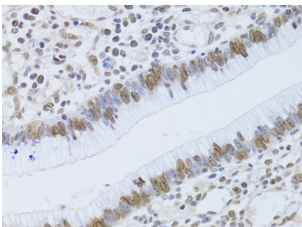
Immunohistochemistry of paraffin-embedded mouse brain using LMNB2 Antibody (abx004970) at dilution of 1/200 (40x lens).



Immunohistochemistry of paraffin-embedded rat brain using LMNB2 Antibody (abx004970) at dilution of 1/100 (40x lens).

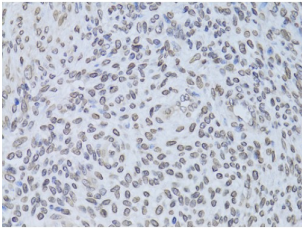


Immunohistochemistry of paraffin-embedded rat pancreas using LMNB2 Antibody (abx004970) at dilution of 1/100 (40x lens).

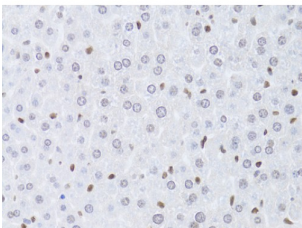


Immunohistochemistry of paraffin-embedded human gastric cancer using LMNB2 Antibody (abx004970) at dilution of 1/100 (40x lens).

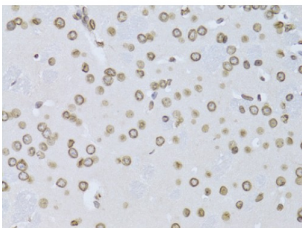
Abbexa Ltd, Innovation Centre, Cambridge Science Park, Cambridge, CB4 0EY, UK  
Telephone: +44 (0) 1223 755950 - Fax: +44 (0) 1223 755951 - E-Mail: [info@abbexa.com](mailto:info@abbexa.com)



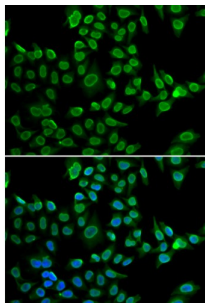
Immunohistochemistry of paraffin-embedded human adenomyosis using LMNB2 Antibody (abx004970) at dilution of 1/100 (40x lens).



Immunohistochemistry of paraffin-embedded mouse liver using LMNB2 Antibody (abx004970) at dilution of 1/100 (40x lens).



Immunohistochemistry of paraffin-embedded mouse brain using LMNB2 Antibody (abx004970) at dilution of 1/100 (40x lens).



Immunofluorescence analysis of U2OS cells using LMNB2 antibody (abx004970). Blue: DAPI for nuclear staining.

LMNB2 Antibody is a Rabbit Polyclonal antibody against LMNB2. This gene encodes a B type nuclear lamin. The nuclear lamina consists of a two-dimensional matrix of proteins located next to the inner nuclear membrane. The lamin family of proteins make up the matrix and are highly conserved in evolution. During mitosis, the lamina matrix is reversibly disassembled as the lamin proteins are phosphorylated. Lamin proteins are thought to be involved in nuclear stability, chromatin structure and gene expression. Vertebrate lamins consist of two types, A and B. Mutations in this gene are associated with acquired partial lipodystrophy.

**Target:** LMNB2

**Reactivity:** Human, Mouse, Rat

Abbexa Ltd, Innovation Centre, Cambridge Science Park, Cambridge, CB4 0EY, UK  
Telephone: +44 (0) 1223 755950 - Fax: +44 (0) 1223 755951 - E-Mail: [info@abbexa.com](mailto:info@abbexa.com)

<b>Host:</b>	Rabbit
<b>Clonality:</b>	Polyclonal
<b>Tested Applications:</b>	WB, IHC, IF/ICC
<b>Recommended dilutions:</b>	WB: 1/500 - 1/2000, IHC: 1/50 - 1/200, IF/ICC: 1/50 - 1/100. Optimal dilutions/concentrations should be determined by the end user.
<b>Immunogen:</b>	Recombinant protein of human LMNB2.
<b>Purification:</b>	Affinity purified.
<b>Form:</b>	Liquid
<b>Isotype:</b>	IgG
<b>Conjugation:</b>	Unconjugated
<b>Storage:</b>	Aliquot and store at -20 °C. Avoid repeated freeze/thaw cycles.
<b>Molecular Weight:</b>	Calculated MW: 69 kDa Observed MW: 70 kDa
<b>Swiss Prot:</b>	<a href="#">Q03252</a>
<b>GeneID:</b>	<a href="#">84823</a>
<b>Gene Symbol:</b>	LMNB2
<b>Concentration:</b>	> 1 mg/ml
<b>Buffer:</b>	PBS, pH 7.3, 0.02% sodium azide, 50% glycerol.
<b>Note:</b>	This product is for research use only.