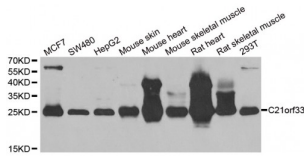


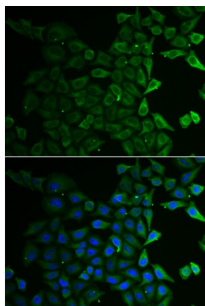
Abbexa Ltd, Innovation Centre, Cambridge Science Park, Cambridge, CB4 0EY, UK  
Telephone: +44 (0) 1223 755950 - Fax: +44 (0) 1223 755951 - E-Mail: info@abbexa.com

## Chromosome 21 Open Reading Frame 33 (C21orf33) Antibody

Catalogue No.: abx004922



Western blot analysis of extracts of various cell lines, using C21orf33 antibody (abx004922) at 1/1000 dilution.



Immunofluorescence analysis of HeLa cells using C21orf33 antibody (abx004922). Blue: DAPI for nuclear staining.

C21orf33 Antibody is a Rabbit Polyclonal antibody against C21orf33. This gene encodes a potential mitochondrial protein that is a member of the DJ-1/Pfpl gene family. This protein is overexpressed in fetal Down syndrome brain. Alternate splicing results in multiple transcript variants.

**Target:** C21orf33

**Reactivity:** Human, Mouse, Rat

**Host:** Rabbit

**Clonality:** Polyclonal

**Tested Applications:** WB, IF/ICC

**Recommended dilutions:** WB: 1/500 - 1/2000, IF/ICC: 1/10 - 1/100. Optimal dilutions/concentrations should be determined by the end user.

**Immunogen:** Recombinant protein of human C21orf33.

**Purification:** Affinity purified.

**Form:** Liquid

**Isotype:** IgG

Abbexa Ltd, Innovation Centre, Cambridge Science Park, Cambridge, CB4 0EY, UK  
Telephone: +44 (0) 1223 755950 - Fax: +44 (0) 1223 755951 - E-Mail: info@abbexa.com

<b>Conjugation:</b>	Unconjugated
<b>Storage:</b>	Aliquot and store at -20 °C. Avoid repeated freeze/thaw cycles.
<b>Molecular Weight:</b>	Calculated MW: 24 kDa/28 kDa Observed MW: 25 kDa
<b>Swiss Prot:</b>	<a href="#">P30042</a>
<b>GeneID:</b>	<a href="#">8209</a>
<b>Gene Symbol:</b>	C21orf33
<b>Concentration:</b>	> 1 mg/ml
<b>Buffer:</b>	PBS, pH 7.3, 0.02% sodium azide, 50% glycerol.
<b>Note:</b>	This product is for research use only.