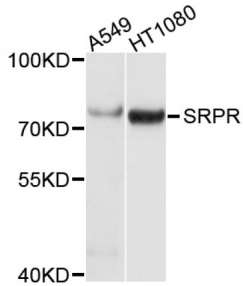


**SRP Receptor Alpha Subunit (SRPR) Antibody**

Catalogue No.: abx004555



Western blot analysis of extracts of various cell lines, using SRPR antibody (abx004555) at 1/1000 dilution.

SRPR Antibody is a Rabbit Polyclonal antibody against SRPR. The gene encodes a subunit of the endoplasmic reticulum signal recognition particle receptor that, in conjunction with the signal recognition particle, is involved in the targeting and translocation of signal sequence tagged secretory and membrane proteins across the endoplasmic reticulum. Alternative splicing results in multiple transcript variants.

**Target:** SRPR**Reactivity:** Human**Host:** Rabbit**Clonality:** Polyclonal**Tested Applications:** WB**Recommended dilutions:** WB: 1/500 - 1/2000. Optimal dilutions/concentrations should be determined by the end user.**Immunogen:** Recombinant protein of human SRPR.**Purification:** Affinity purified.**Form:** Liquid**Isotype:** IgG**Conjugation:** Unconjugated**Storage:** Aliquot and store at -20 °C. Avoid repeated freeze/thaw cycles.**Molecular Weight:** Calculated MW: 66 kDa/69 kDa  
Observed MW: 75 kDa**Swiss Prot:** [P08240](#)

Abbexa Ltd, Innovation Centre, Cambridge Science Park, Cambridge, CB4 0EY, UK  
Telephone: +44 (0) 1223 755950 - Fax: +44 (0) 1223 755951 - E-Mail: [info@abbexa.com](mailto:info@abbexa.com)

**GeneID:** [6734](#)

**Gene Symbol:** SRPR

**Concentration:** > 1 mg/ml

**Buffer:** PBS, pH 7.3, 0.02% sodium azide, 50% glycerol.

**Note:** This product is for research use only.