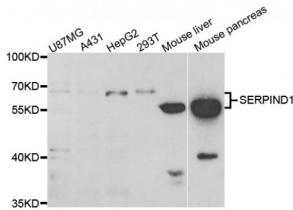


Abbexa Ltd, Innovation Centre, Cambridge Science Park, Cambridge, CB4 0EY, UK  
Telephone: +44 (0) 1223 755950 - Fax: +44 (0) 1223 755951 - E-Mail: info@abbexa.com

## Serpin D1 (SERPIND1) Antibody

Catalogue No.: abx004485



Western blot analysis of extracts of various cell lines, using SERPIND1 antibody (abx004485) at 1/1000 dilution.

SERPIND1 Antibody is a Rabbit Polyclonal antibody against SERPIND1. The product encoded by this gene is a serine proteinase inhibitor which rapidly inhibits thrombin in the presence of dermatan sulfate or heparin. The gene contains five exons and four introns. This protein shares homology with antithrombin III and other members of the alpha 1-antitrypsin superfamily. Mutations in this gene are associated with heparin cofactor II deficiency.

**Target:** SERPIND1

**Reactivity:** Human, Mouse, Rat

**Host:** Rabbit

**Clonality:** Polyclonal

**Tested Applications:** WB

**Recommended dilutions:** WB: 1/500 - 1/2000. Optimal dilutions/concentrations should be determined by the end user.

**Immunogen:** Recombinant protein of human SERPIND1.

**Purification:** Affinity purified.

**Form:** Liquid

**Isotype:** IgG

**Conjugation:** Unconjugated

**Storage:** Aliquot and store at -20 °C. Avoid repeated freeze/thaw cycles.

**Molecular Weight:** Calculated MW: 57 kDa  
Observed MW: 55 kDa

**Swiss Prot:** [P05546](#)

Abbexa Ltd, Innovation Centre, Cambridge Science Park, Cambridge, CB4 0EY, UK  
Telephone: +44 (0) 1223 755950 - Fax: +44 (0) 1223 755951 - E-Mail: info@abbexa.com

**GeneID:** [3053](#)

**Gene Symbol:** SERPIND1

**Concentration:** > 1 mg/ml

**Buffer:** PBS, pH 7.3, 0.02% sodium azide, 50% glycerol.

**Note:** This product is for research use only.