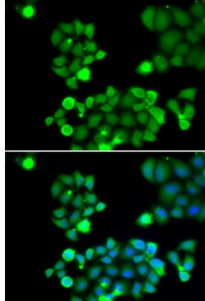


Nei Endonuclease VIII Like Protein 1 (NEIL1) Antibody

Catalogue No.: abx004468



Immunofluorescence analysis of HeLa cells using NEIL1 antibody (abx004468). Blue: DAPI for nuclear staining.

NEIL1 Antibody is a Rabbit Polyclonal antibody against NEIL1. This gene is a member of the Nei endonuclease VIII-like gene family which encodes DNA glycosylases. The encoded enzyme participates in the DNA repair pathway by initiating base excision repair by removing damaged bases, primarily oxidized pyrimidines. Multiple transcript variants encoding different isoforms have been found for this gene.

Target: NEIL1

Reactivity: Human

Host: Rabbit

Clonality: Polyclonal

Tested Applications: IF/ICC

Recommended dilutions: IF/ICC: 1/50 - 1/200. Optimal dilutions/concentrations should be determined by the end user.

Immunogen: Recombinant protein of human NEIL1.

Purification: Affinity purified.

Form: Liquid

Isotype: IgG

Conjugation: Unconjugated

Storage: Aliquot and store at -20 °C. Avoid repeated freeze/thaw cycles.

Molecular Weight: Calculated MW: 43 kDa

Swiss Prot: [Q96F14](#)

Abbexa Ltd, Innovation Centre, Cambridge Science Park, Cambridge, CB4 0EY, UK
Telephone: +44 (0) 1223 755950 - Fax: +44 (0) 1223 755951 - E-Mail: info@abbexa.com

GeneID: [79661](#)

Gene Symbol: NEIL1

Concentration: > 1 mg/ml

Buffer: PBS, pH 7.3, 0.02% sodium azide, 50% glycerol.

Note: This product is for research use only.