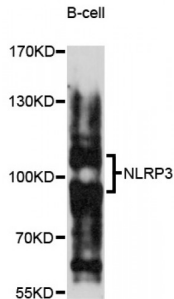


Abbexa Ltd, Innovation Centre, Cambridge Science Park, Cambridge, CB4 0EY, UK  
Telephone: +44 (0) 1223 755950 - Fax: +44 (0) 1223 755951 - E-Mail: info@abbexa.com

## NACHT, LRR And PYD Domains-Containing Protein 3 (NLRP3) Antibody

Catalogue No.: abx004322



Western blot analysis of extracts of B-cell cells, using NLRP3 antibody (abx004322) at 1/1000 dilution.

NLRP3 Antibody is a Rabbit Polyclonal antibody against NLRP3. This gene encodes a pyrin-like protein containing a pyrin domain, a nucleotide-binding site (NBS) domain, and a leucine-rich repeat (LRR) motif. This protein interacts with the apoptosis-associated speck-like protein PYCARD/ASC, which contains a caspase recruitment domain, and is a member of the NALP3 inflammasome complex. This complex functions as an upstream activator of NF-kappaB signaling, and it plays a role in the regulation of inflammation, the immune response, and apoptosis. Mutations in this gene are associated with familial cold autoinflammatory syndrome (FCAS), Muckle-Wells syndrome (MWS), chronic infantile neurological cutaneous and articular (CINCA) syndrome, and neonatal-onset multisystem inflammatory disease (NOMID). Multiple alternatively spliced transcript variants encoding distinct isoforms have been identified for this gene. Alternative 5' UTR structures are suggested by available data; however, insufficient evidence is available to determine if all of the represented 5' UTR splice patterns are biologically valid.

**Target:** NLRP3

**Reactivity:** Human, Mouse, Rat

**Host:** Rabbit

**Clonality:** Polyclonal

**Tested Applications:** WB

**Recommended dilutions:** WB: 1/500 - 1/2000. Optimal dilutions/concentrations should be determined by the end user.

**Immunogen:** Recombinant protein of human NLRP3.

**Purification:** Affinity purified.

**Form:** Liquid

**Isotype:** IgG

Abbexa Ltd, Innovation Centre, Cambridge Science Park, Cambridge, CB4 0EY, UK  
Telephone: +44 (0) 1223 755950 - Fax: +44 (0) 1223 755951 - E-Mail: [info@abbexa.com](mailto:info@abbexa.com)

<b>Conjugation:</b>	Unconjugated
<b>Storage:</b>	Aliquot and store at -20 °C. Avoid repeated freeze/thaw cycles.
<b>Molecular Weight:</b>	Calculated MW: 83 kDa/105 kDa/111 kDa/112 kDa/115 kDa/118 kDa Observed MW: 85 kDa, 110 kDa
<b>Swiss Prot:</b>	<a href="#">Q96P20</a>
<b>GeneID:</b>	<a href="#">114548</a>
<b>Gene Symbol:</b>	NLRP3
<b>Concentration:</b>	> 1 mg/ml
<b>Buffer:</b>	PBS, pH 7.3, 0.02% sodium azide, 50% glycerol.
<b>Note:</b>	This product is for research use only.