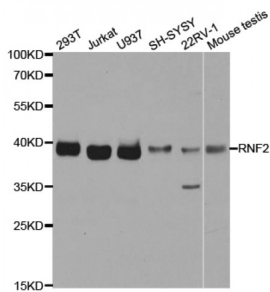


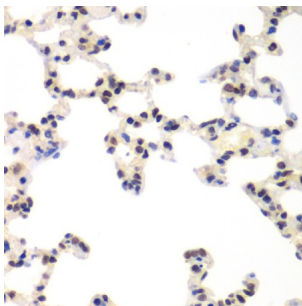
Abbexa Ltd, Innovation Centre, Cambridge Science Park, Cambridge, CB4 0EY, UK
Telephone: +44 (0) 1223 755950 - Fax: +44 (0) 1223 755951 - E-Mail: info@abbexa.com

Ring Finger Protein 2 (RNF2) Antibody

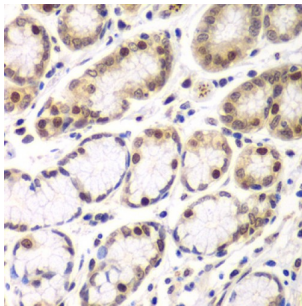
Catalogue No.: abx004262



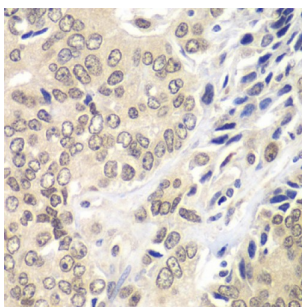
Western blot analysis of extracts of various cell lines, using RNF2 antibody (abx004262) at 1/1000 dilution.



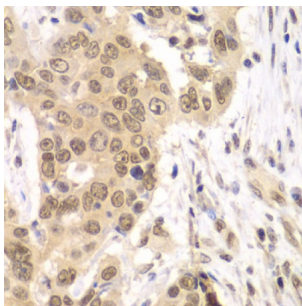
Immunohistochemistry of paraffin-embedded rat lung using RNF2 antibody (abx004262) at dilution of 1/100 (40x lens).



Immunohistochemistry of paraffin-embedded human colon using RNF2 antibody (abx004262) at dilution of 1/100 (40x lens).

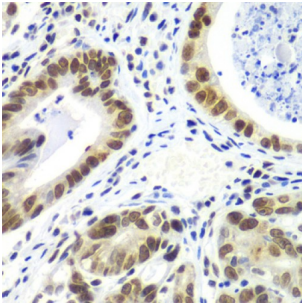


Immunohistochemistry of paraffin-embedded human prostate cancer using RNF2 antibody (abx004262) at dilution of 1/100 (40x lens).

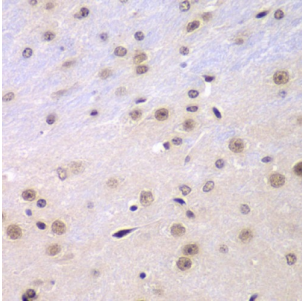


Immunohistochemistry of paraffin-embedded human esophageal cancer using RNF2 antibody (abx004262) at dilution of 1/100 (40x lens).

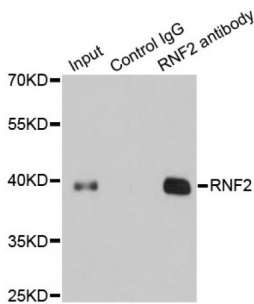
Abbexa Ltd, Innovation Centre, Cambridge Science Park, Cambridge, CB4 0EY, UK
Telephone: +44 (0) 1223 755950 - Fax: +44 (0) 1223 755951 - E-Mail: info@abbexa.com



Immunohistochemistry of paraffin-embedded human gastric cancer using RNF2 antibody (abx004262) at dilution of 1/100 (40x lens).



Immunohistochemistry of paraffin-embedded mouse brain using RNF2 antibody (abx004262) at dilution of 1/100 (40x lens).



Immunoprecipitation analysis of 200 µg extracts of 293T cells using 1 µg RNF2 antibody (abx004262). Western blot was performed from the immunoprecipitate using RNF2 antibody (abx004262) at a dilution of 1/1000.

RNF2 Antibody is a Rabbit Polyclonal antibody against RNF2. Polycomb group (PcG) of proteins form the multiprotein complexes that are important for the transcription repression of various genes involved in development and cell proliferation. The protein encoded by this gene is one of the PcG proteins. It has been shown to interact with, and suppress the activity of, transcription factor CP2 (TFCP2/CP2). Studies of the mouse counterpart suggested the involvement of this gene in the specification of anterior-posterior axis, as well as in cell proliferation in early development. This protein was also found to interact with huntingtin interacting protein 2 (HIP2), an ubiquitin-conjugating enzyme, and possess ubiquitin ligase activity.

Target: RNF2

Reactivity: Human, Mouse, Rat

Host: Rabbit

Clonality: Polyclonal

Tested Applications: WB, IHC, IP, ChIP

Recommended dilutions: WB: 1/500 - 1/2000, IHC: 1/50 - 1/200, IP: 1/50 - 1/200, ChIP: 1/50 - 1/200. Optimal dilutions/concentrations should be determined by the end user.

Abbexa Ltd, Innovation Centre, Cambridge Science Park, Cambridge, CB4 0EY, UK
Telephone: +44 (0) 1223 755950 - Fax: +44 (0) 1223 755951 - E-Mail: info@abbexa.com

| | |
|--------------------------|---|
| Immunogen: | Recombinant protein of human RNF2. |
| Purification: | Affinity purified. |
| Form: | Liquid |
| Isotype: | IgG |
| Conjugation: | Unconjugated |
| Storage: | Aliquot and store at -20 °C. Avoid repeated freeze/thaw cycles. |
| Molecular Weight: | Calculated MW: 29 kDa/37 kDa Observed MW: 39 kDa |
| Swiss Prot: | Q99496 |
| GeneID: | 6045 |
| Gene Symbol: | RNF2 |
| Concentration: | > 1 mg/ml |
| Buffer: | PBS, pH 7.3, 0.02% sodium azide, 50% glycerol. |
| Note: | This product is for research use only. |