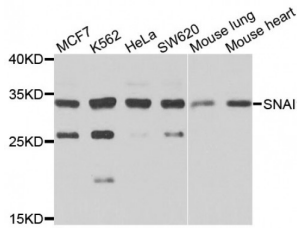


**SNAIL (SNAI1) Antibody**

Catalogue No.: abx004244



Western blot analysis of extracts of various cell lines, using SNAI1 antibody (abx004244) at 1/1000 dilution.

SNAIL Antibody is a Rabbit Polyclonal antibody against SNAIL. The Drosophila embryonic protein SNAIL is a zinc finger transcriptional repressor which downregulates the expression of ectodermal genes within the mesoderm. The nuclear protein encoded by this gene is structurally similar to the Drosophila SNAIL protein, and is also thought to be critical for mesoderm formation in the developing embryo. At least two variants of a similar processed pseudogene have been found on chromosome 2.

- Target:** SNAIL
- Reactivity:** Human, Mouse, Rat
- Host:** Rabbit
- Clonality:** Polyclonal
- Tested Applications:** WB, IHC
- Recommended dilutions:** WB: 1/500 - 1/2000, IHC: 1/50 - 1/100. Optimal dilutions/concentrations should be determined by the end user.
- Immunogen:** Recombinant protein of human Snail.
- Purification:** Affinity purified.
- Form:** Liquid
- Isotype:** IgG
- Conjugation:** Unconjugated
- Storage:** Aliquot and store at -20 °C. Avoid repeated freeze/thaw cycles.
- Molecular Weight:** Calculated MW: 29 kDa  
Observed MW: 29 kDa

Abbexa Ltd, Innovation Centre, Cambridge Science Park, Cambridge, CB4 0EY, UK  
Telephone: +44 (0) 1223 755950 - Fax: +44 (0) 1223 755951 - E-Mail: [info@abbexa.com](mailto:info@abbexa.com)

**Swiss Prot:** [O95863](#)

**GeneID:** [6615](#)

**Gene Symbol:** SNAI1

**Concentration:** 1.67 mg/ml

**Buffer:** PBS, pH 7.3, 0.02% sodium azide, 50% glycerol.

**Note:** This product is for research use only.