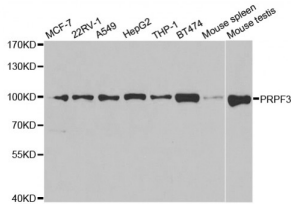


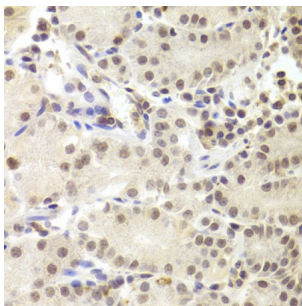
Abbexa Ltd, Innovation Centre, Cambridge Science Park, Cambridge, CB4 0EY, UK
 Telephone: +44 (0) 1223 755950 - Fax: +44 (0) 1223 755951 - E-Mail: info@abbexa.com

Pre-mRNA Processing Factor 3 (PRPF3) Antibody

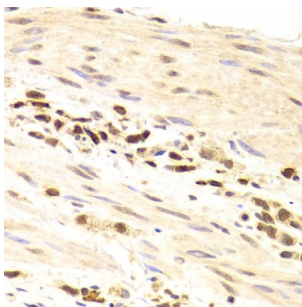
Catalogue No.: abx004199



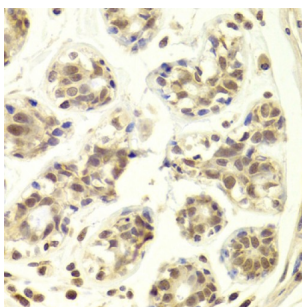
Western blot analysis of extracts of various cell lines, using PRPF3 antibody (abx004199) at 1/1000 dilution.



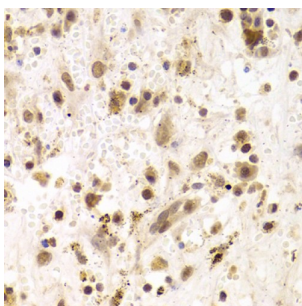
Immunohistochemistry of paraffin-embedded human stomach using PRPF3 Antibody (abx004199) at dilution of 1/100 (40x lens).



Immunohistochemistry of paraffin-embedded human gastric cancer using PRPF3 Antibody (abx004199) at dilution of 1/100 (40x lens).

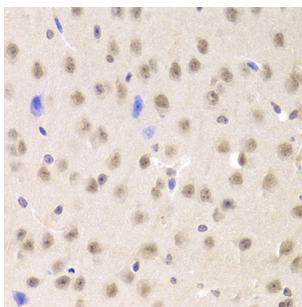


Immunohistochemistry of paraffin-embedded human breast using PRPF3 Antibody (abx004199) at dilution of 1/100 (40x lens).

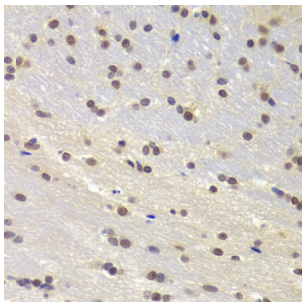


Immunohistochemistry of paraffin-embedded human liver cancer using PRPF3 Antibody (abx004199) at dilution of 1/100 (40x lens).

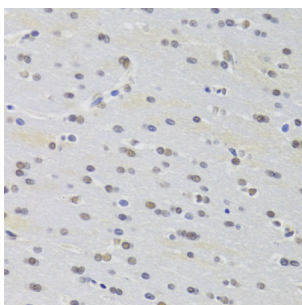
Abbexa Ltd, Innovation Centre, Cambridge Science Park, Cambridge, CB4 0EY, UK
Telephone: +44 (0) 1223 755950 - Fax: +44 (0) 1223 755951 - E-Mail: info@abbexa.com



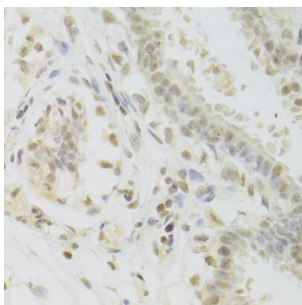
Immunohistochemistry of paraffin-embedded mouse brain using PRPF3 Antibody (abx004199) at dilution of 1/100 (40x lens).



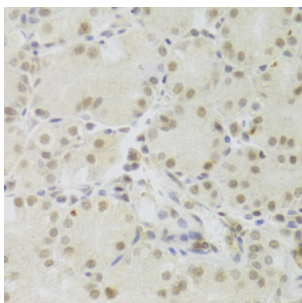
Immunohistochemistry of paraffin-embedded rat brain using PRPF3 Antibody (abx004199) at dilution of 1/100 (40x lens).



Immunohistochemistry of paraffin-embedded rat brain using PRPF3 Antibody (abx004199) at dilution of 1/100 (40x lens).

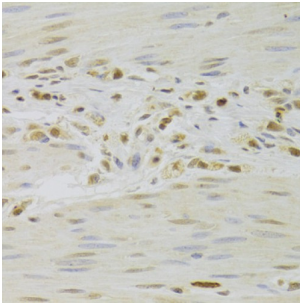


Immunohistochemistry of paraffin-embedded human breast using PRPF3 Antibody (abx004199) at dilution of 1/100 (40x lens).

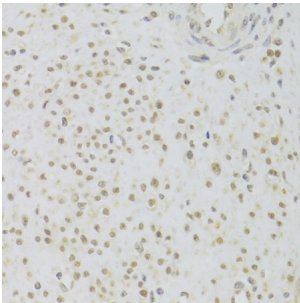


Immunohistochemistry of paraffin-embedded human stomach using PRPF3 Antibody (abx004199) at dilution of 1/100 (40x lens).

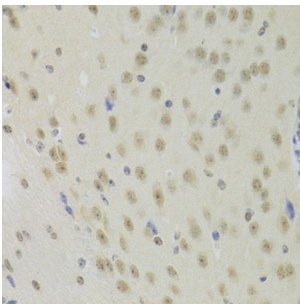
Abbexa Ltd, Innovation Centre, Cambridge Science Park, Cambridge, CB4 0EY, UK
Telephone: +44 (0) 1223 755950 - Fax: +44 (0) 1223 755951 - E-Mail: info@abbexa.com



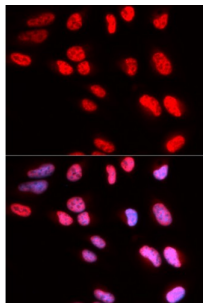
Immunohistochemistry of paraffin-embedded human gastric cancer using PRPF3 Antibody (abx004199) at dilution of 1/100 (40x lens).



Immunohistochemistry of paraffin-embedded human leiomyoma of uterus using PRPF3 Antibody (abx004199) at dilution of 1/100 (40x lens).



Immunohistochemistry of paraffin-embedded mouse brain using PRPF3 Antibody (abx004199) at dilution of 1/100 (40x lens).



Immunofluorescence analysis of U2OS cells using PRPF3 antibody (abx004199). Blue: DAPI for nuclear staining.

PRPF3 Antibody is a Rabbit Polyclonal antibody against PRPF3. The removal of introns from nuclear pre-mRNAs occurs on complexes called spliceosomes, which are made up of 4 small nuclear ribonucleoprotein (snRNP) particles and an undefined number of transiently associated splicing factors. This gene product is one of several proteins that associate with U4 and U6 snRNPs. Mutations in this gene are associated with retinitis pigmentosa-18.

Target: PRPF3

Reactivity: Human, Mouse, Rat

Host: Rabbit

Abbexa Ltd, Innovation Centre, Cambridge Science Park, Cambridge, CB4 0EY, UK
Telephone: +44 (0) 1223 755950 - Fax: +44 (0) 1223 755951 - E-Mail: info@abbexa.com

| | |
|-------------------------------|---|
| Clonality: | Polyclonal |
| Tested Applications: | WB, IHC, IF/ICC |
| Recommended dilutions: | WB: 1/500 - 1/2000, IHC: 1/50 - 1/200, IF/ICC: 1/50 - 1/200. Optimal dilutions/concentrations should be determined by the end user. |
| Immunogen: | Recombinant protein of human PRPF3. |
| Purification: | Affinity purified. |
| Form: | Liquid |
| Isotype: | IgG |
| Conjugation: | Unconjugated |
| Storage: | Aliquot and store at -20 °C. Avoid repeated freeze/thaw cycles. |
| Molecular Weight: | Calculated MW: 31 kDa/77 kDa Observed MW: 100 kDa |
| Swiss Prot: | O43395 |
| GeneID: | 9129 |
| Gene Symbol: | PRPF3 |
| Concentration: | > 1 mg/ml |
| Buffer: | PBS, pH 7.3, 0.02% sodium azide, 50% glycerol. |
| Note: | This product is for research use only. |