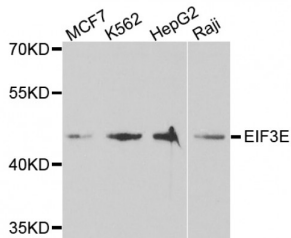


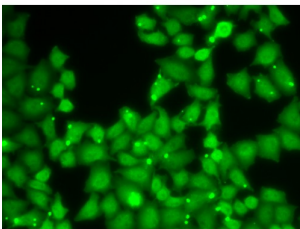
Abbexa Ltd, Innovation Centre, Cambridge Science Park, Cambridge, CB4 0EY, UK
Telephone: +44 (0) 1223 755950 - Fax: +44 (0) 1223 755951 - E-Mail: info@abbexa.com

EIF3E (EIF3E) Antibody

Catalogue No.: abx004170



Western blot analysis of extracts of various cell lines, using EIF3E antibody (abx004170) at 1/1000 dilution.



Immunofluorescence analysis of HeLa cells using EIF3E antibody (abx004170).

EIF3E Antibody is a Rabbit Polyclonal antibody against EIF3E.

Target: EIF3E

Reactivity: Human, Mouse

Host: Rabbit

Clonality: Polyclonal

Tested Applications: WB, IF/ICC

Recommended dilutions: WB: 1/500 - 1/2000, IF/ICC: 1/50 - 1/100. Optimal dilutions/concentrations should be determined by the end user.

Immunogen: Recombinant protein of human EIF3E.

Purification: Affinity purified.

Form: Liquid

Isotype: IgG

Conjugation: Unconjugated

Abbexa Ltd, Innovation Centre, Cambridge Science Park, Cambridge, CB4 0EY, UK
Telephone: +44 (0) 1223 755950 - Fax: +44 (0) 1223 755951 - E-Mail: info@abbexa.com

Storage: Aliquot and store at -20 °C. Avoid repeated freeze/thaw cycles.

Molecular Weight: Calculated MW: 52 kDa
Observed MW: 52 kDa

Swiss Prot: [P60228](#)

GeneID: [3646](#)

Gene Symbol: EIF3E

Concentration: > 1 mg/ml

Buffer: PBS, pH 7.3, 0.02% sodium azide, 50% glycerol.

Note: This product is for research use only.