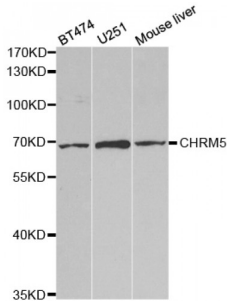
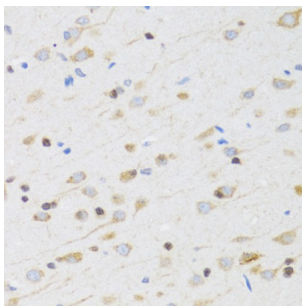


Muscarinic Acetylcholine Receptor M5 (CHRM5) Antibody

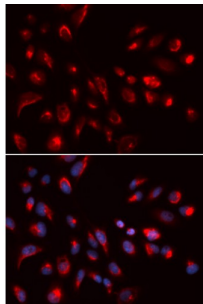
Catalogue No.: abx004108



Western blot analysis of extracts of various cell lines, using CHRM5 antibody (abx004108) at 1/1000 dilution.



Immunohistochemistry of paraffin-embedded rat brain using CHRM5 antibody (abx004108) at dilution of 1/100 (40x lens).



Immunofluorescence analysis of U2OS cells using CHRM5 antibody (abx004108). Blue: DAPI for nuclear staining.

CHRM5 Antibody is a Rabbit Polyclonal antibody against CHRM5. The muscarinic cholinergic receptors belong to a larger family of G protein-coupled receptors. The functional diversity of these receptors is defined by the binding of acetylcholine and includes cellular responses such as adenylate cyclase inhibition, phosphoinositide degeneration, and potassium channel mediation. Muscarinic receptors influence many effects of acetylcholine in the central and peripheral nervous system. The clinical implications of this receptor are unknown; however, stimulation of this receptor is known to increase cyclic AMP levels.

Target:	CHRM5
Reactivity:	Human, Mouse, Rat
Host:	Rabbit
Clonality:	Polyclonal
Tested Applications:	WB, IHC, IF/ICC

Abbexa Ltd, Innovation Centre, Cambridge Science Park, Cambridge, CB4 0EY, UK
Telephone: +44 (0) 1223 755950 - Fax: +44 (0) 1223 755951 - E-Mail: info@abbexa.com

Recommended dilutions: WB: 1/500 - 1/2000, IHC: 1/50 - 1/200, IF/ICC: 1/50 - 1/200. Optimal dilutions/concentrations should be determined by the end user.

Immunogen: Recombinant protein of human CHRM5.

Purification: Affinity purified.

Form: Liquid

Isotype: IgG

Conjugation: Unconjugated

Storage: Aliquot and store at -20 °C. Avoid repeated freeze/thaw cycles.

Molecular Weight: Calculated MW: 60 kDa
Observed MW: 68 kDa

Swiss Prot: [P08912](#)

GeneID: [1133](#)

Gene Symbol: CHRM5

Concentration: > 1 mg/ml

Buffer: PBS, pH 7.3, 0.02% sodium azide, 50% glycerol.

Note: This product is for research use only.