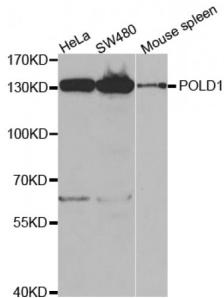
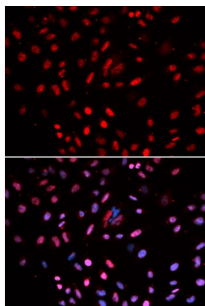


DNA Polymerase Delta 1, Catalytic Subunit (POLD1) Antibody

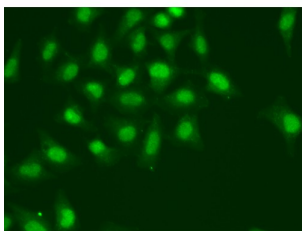
Catalogue No.: abx004069



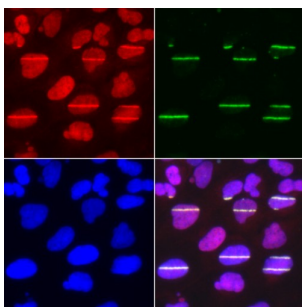
Western blot analysis of extracts of various cell lines, using POLD1 antibody (abx004069) at 1/1000 dilution.



Immunofluorescence analysis of U2OS cells using POLD1 antibody (abx004069). Blue: DAPI for nuclear staining.



Immunofluorescence analysis of A549 cells using POLD1 antibody (abx004069).



Immunofluorescence analysis of U2OS cells using POLD1 antibody (abx004069). Green γ H2AX (phospho S139) used for DNA damage marker. Blue: DAPI for nuclear staining. Cells were treated by UV-A laser.

POLD1 Antibody is a Rabbit Polyclonal antibody against POLD1. This gene encodes the 125-kDa catalytic subunit of DNA polymerase delta. DNA polymerase delta possesses both polymerase and 3' to 5' exonuclease activity and plays a critical role in DNA replication and repair. Alternatively spliced transcript variants have been observed for this gene, and a pseudogene of this gene is located on the long arm of chromosome 6.

Target: POLD1

Abbexa Ltd, Innovation Centre, Cambridge Science Park, Cambridge, CB4 0EY, UK
Telephone: +44 (0) 1223 755950 - Fax: +44 (0) 1223 755951 - E-Mail: info@abbexa.com

Reactivity:	Human, Mouse, Rat
Host:	Rabbit
Clonality:	Polyclonal
Tested Applications:	WB, IHC, IF/ICC
Recommended dilutions:	WB: 1/500 - 1/2000, IHC: 1/50 - 1/200, IF/ICC: 1/50 - 1/200. Optimal dilutions/concentrations should be determined by the end user.
Immunogen:	Recombinant protein of human POLD1.
Purification:	Affinity purified.
Form:	Liquid
Isotype:	IgG
Conjugation:	Unconjugated
Storage:	Aliquot and store at -20 °C. Avoid repeated freeze/thaw cycles.
Molecular Weight:	Calculated MW: 123 kDa Observed MW: 130 kDa
Swiss Prot:	P28340
GeneID:	5424
Gene Symbol:	POLD1
Concentration:	> 1 mg/ml
Buffer:	PBS, pH 7.3, 0.02% sodium azide, 50% glycerol.
Note:	This product is for research use only.