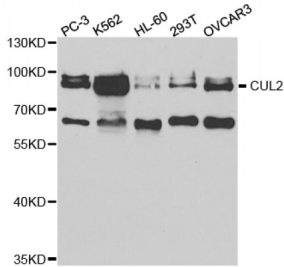


Abbexa Ltd, Innovation Centre, Cambridge Science Park, Cambridge, CB4 0EY, UK
 Telephone: +44 (0) 1223 755950 - Fax: +44 (0) 1223 755951 - E-Mail: info@abbexa.com

Cullin 2 (CUL2) Antibody

Catalogue No.: abx004058



Western blot analysis of extracts of various cell lines, using CUL2 antibody (abx004058) at 1/1000 dilution.

Cullin 2 Antibody is a Rabbit Polyclonal antibody against Cullin 2. Cullin 2 is a core component of multiple cullin-RING-based ECS (ElonginB/C-Cullin 2/5-SOCS-box protein) E3 ubiquitin-protein ligase complexes, which mediate the ubiquitination of target proteins. It serves as a rigid scaffold in the complex and may contribute to catalysis through positioning of the substrate and the ubiquitin-conjugating enzyme.

Target: Cullin 2

Reactivity: Human

Host: Rabbit

Clonality: Polyclonal

Tested Applications: WB, IF/ICC

Recommended dilutions: WB: 1/500 - 1/2000, IF/ICC: 1/50 - 1/200. Optimal dilutions/concentrations should be determined by the end user.

Immunogen: Recombinant protein of human CUL2.

Purification: Affinity purified.

Form: Liquid

Isotype: IgG

Conjugation: Unconjugated

Storage: Aliquot and store at -20 °C. Avoid repeated freeze/thaw cycles.

Molecular Weight: Calculated MW: 86 kDa/89 kDa
 Observed MW: 90 kDa

Abbexa Ltd, Innovation Centre, Cambridge Science Park, Cambridge, CB4 0EY, UK
Telephone: +44 (0) 1223 755950 - Fax: +44 (0) 1223 755951 - E-Mail: info@abbexa.com

Swiss Prot: [Q13617](#)

GeneID: [8453](#)

Gene Symbol: CUL2

Concentration: > 1 mg/ml

Buffer: PBS, pH 7.3, 0.02% sodium azide, 50% glycerol.

Note: This product is for research use only.