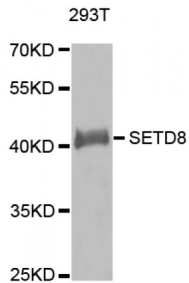


Abbexa Ltd, Innovation Centre, Cambridge Science Park, Cambridge, CB4 0EY, UK  
Telephone: +44 (0) 1223 755950 - Fax: +44 (0) 1223 755951 - E-Mail: [info@abbexa.com](mailto:info@abbexa.com)

## Lysine Methyltransferase 5A (SETD8) Antibody

Catalogue No.: abx004032



Western blot analysis of extracts of 293T cells, using SETD8 antibody (abx004032).

SETD8 Antibody is a Rabbit Polyclonal antibody against SETD8.

**Target:** SETD8

**Reactivity:** Human, Mouse, Rat

**Host:** Rabbit

**Clonality:** Polyclonal

**Tested Applications:** WB

**Recommended dilutions:** WB: 1/500 - 1/2000. Optimal dilutions/concentrations should be determined by the end user.

**Immunogen:** Recombinant protein of human SETD8.

**Purification:** Affinity purified.

**Form:** Liquid

**Isotype:** IgG

**Conjugation:** Unconjugated

**Storage:** Aliquot and store at -20 °C. Avoid repeated freeze/thaw cycles.

**Molecular Weight:** Calculated MW: 39 kDa/42 kDa  
Observed MW: 43 kDa

**Swiss Prot:** [Q9NQR1](#)

**GeneID:** [387893](#)

Abbexa Ltd, Innovation Centre, Cambridge Science Park, Cambridge, CB4 0EY, UK  
Telephone: +44 (0) 1223 755950 - Fax: +44 (0) 1223 755951 - E-Mail: [info@abbexa.com](mailto:info@abbexa.com)

**Gene Symbol:** SETD8

**Concentration:** > 1 mg/ml

**Buffer:** PBS, pH 7.3, 0.02% sodium azide, 50% glycerol.

**Note:** This product is for research use only.