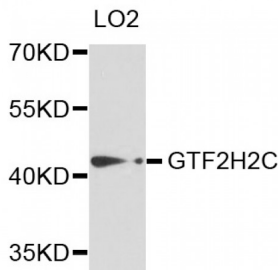


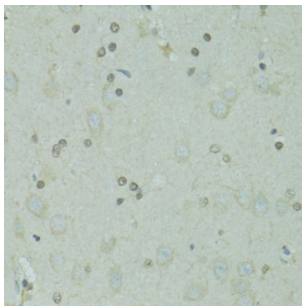
Abbexa Ltd, Innovation Centre, Cambridge Science Park, Cambridge, CB4 0EY, UK
Telephone: +44 (0) 1223 755950 - Fax: +44 (0) 1223 755951 - E-Mail: info@abbexa.com

General Transcription Factor IIH, Polypeptide 2-Like Protein (GTF2H2C) Antibody

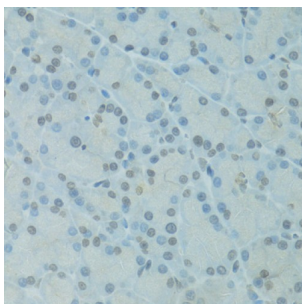
Catalogue No.: abx004025



Western blot analysis of extracts of LO2 cells, using GTF2H2C antibody (abx004025) at 1/1000 dilution.



Immunohistochemistry of paraffin-embedded rat brain using GTF2H2C antibody (abx004025) at dilution of 1/100 (40x lens).



Immunohistochemistry of paraffin-embedded rat pancreas using GTF2H2C antibody (abx004025) at dilution of 1/100 (40x lens).

GTF2H2C Antibody is a Rabbit Polyclonal antibody against GTF2H2C.

Target: GTF2H2C

Reactivity: Human, Rat

Host: Rabbit

Clonality: Polyclonal

Tested Applications: WB, IHC

Recommended dilutions: WB: 1/200 - 1/2000, IHC: 1/50 - 1/200. Optimal dilutions/concentrations should be determined by the end user.

Abbexa Ltd, Innovation Centre, Cambridge Science Park, Cambridge, CB4 0EY, UK
Telephone: +44 (0) 1223 755950 - Fax: +44 (0) 1223 755951 - E-Mail: info@abbexa.com

Immunogen:	Recombinant protein of human GTF2H2C.
Purification:	Affinity purified.
Form:	Liquid
Isotype:	IgG
Conjugation:	Unconjugated
Storage:	Aliquot and store at -20 °C. Avoid repeated freeze/thaw cycles.
Molecular Weight:	Calculated MW: 44 kDa Observed MW: 44 kDa
Swiss Prot:	Q6P1K8
GeneID:	728340
Gene Symbol:	GTF2H2C
Concentration:	> 1 mg/ml
Buffer:	PBS, pH 7.3, 0.02% sodium azide, 50% glycerol.
Note:	This product is for research use only.