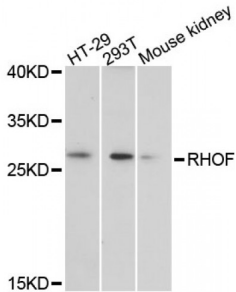


## Rho-Related GTP-Binding Protein RhoF (RHOF) Antibody

Catalogue No.: abx003623



Western blot analysis of extracts of various cell lines, using RHO antibody (abx003623) at 1:3000 dilution.

RHO Antibody is a Rabbit Polyclonal antibody against RHO.

**Target:** RHO

**Reactivity:** Human, Mouse

**Host:** Rabbit

**Clonality:** Polyclonal

**Tested Applications:** WB

**Recommended dilutions:** WB: 1/500 - 1/2000. Optimal dilutions/concentrations should be determined by the end user.

**Immunogen:** Recombinant protein of human RHO.

**Purification:** Affinity purified.

**Form:** Liquid

**Isotype:** IgG

**Conjugation:** Unconjugated

**Storage:** Aliquot and store at -20 °C. Avoid repeated freeze/thaw cycles.

**Molecular Weight:** Calculated MW: 18 kDa/23 kDa  
Observed MW: 27 kDa

**Swiss Prot:** [Q9HBH0](#)

**GeneID:** [54509](#)

Abbexa Ltd, Innovation Centre, Cambridge Science Park, Cambridge, CB4 0EY, UK  
Telephone: +44 (0) 1223 755950 - Fax: +44 (0) 1223 755951 - E-Mail: [info@abbexa.com](mailto:info@abbexa.com)

**Gene Symbol:** RHO F

**Concentration:** > 1 mg/ml

**Buffer:** PBS, pH 7.3, 0.02% sodium azide, 50% glycerol.

**Note:** This product is for research use only.