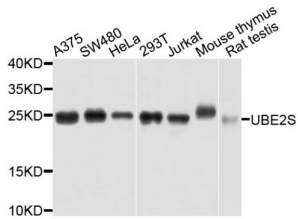


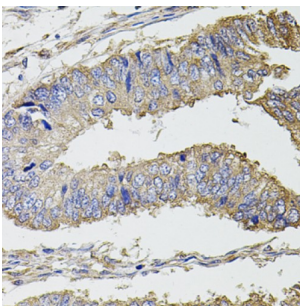
Abbexa Ltd, Innovation Centre, Cambridge Science Park, Cambridge, CB4 0EY, UK
Telephone: +44 (0) 1223 755950 - Fax: +44 (0) 1223 755951 - E-Mail: info@abbexa.com

Ubiquitin-Conjugating Enzyme E2 S (UBE2S) Antibody

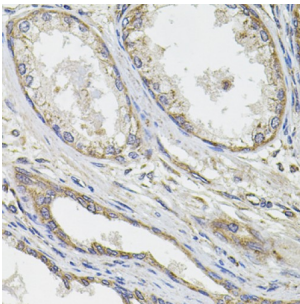
Catalogue No.: abx003511



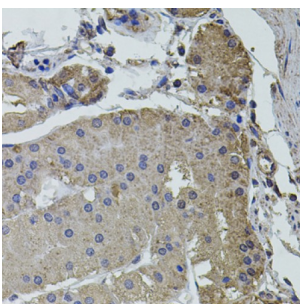
Western blot analysis of extracts of various cell lines, using UBE2S antibody (abx003511) at 1/1000 dilution.



Immunohistochemistry of paraffin-embedded human colon carcinoma using UBE2S antibody (abx003511) at dilution of 1/100 (40x lens).



Immunohistochemistry of paraffin-embedded human prostate cancer using UBE2S antibody (abx003511) at dilution of 1/100 (40x lens).



Immunohistochemistry of paraffin-embedded human stomach using UBE2S antibody (abx003511) at dilution of 1/100 (40x lens).

UBE2S Antibody is a Rabbit Polyclonal antibody against UBE2S. This gene encodes a member of the ubiquitin-conjugating enzyme family. The encoded protein is able to form a thiol ester linkage with ubiquitin in a ubiquitin activating enzyme-dependent manner, a characteristic property of ubiquitin carrier proteins.

Target: UBE2S

Reactivity: Human, Mouse, Rat

Abbexa Ltd, Innovation Centre, Cambridge Science Park, Cambridge, CB4 0EY, UK
Telephone: +44 (0) 1223 755950 - Fax: +44 (0) 1223 755951 - E-Mail: info@abbexa.com

Host:	Rabbit
Clonality:	Polyclonal
Tested Applications:	WB, IHC
Recommended dilutions:	WB: 1/200 - 1/2000, IHC: 1/50 - 1/200. Optimal dilutions/concentrations should be determined by the end user.
Immunogen:	Recombinant protein of human UBE2S.
Purification:	Affinity purified.
Form:	Liquid
Isotype:	IgG
Conjugation:	Unconjugated
Storage:	Aliquot and store at -20 °C. Avoid repeated freeze/thaw cycles.
Molecular Weight:	Calculated MW: 23 kDa Observed MW: 25 kDa
Swiss Prot:	Q16763
GeneID:	27338
Gene Symbol:	UBE2S
Concentration:	> 1 mg/ml
Buffer:	PBS, pH 7.3, 0.02% sodium azide, 50% glycerol.
Note:	This product is for research use only.