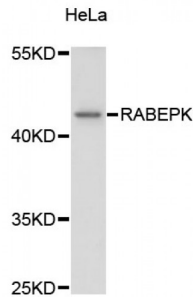


Rab9 Effector Protein With Kelch Motifs (RABEPK) Antibody

Catalogue No.: abx003273



Western blot analysis of extracts of HeLa cells, using RABEPK antibody (abx003273) at 1:3000 dilution.

RABEPK Antibody is a Rabbit Polyclonal antibody against RABEPK.

Target: RABEPK

Reactivity: Human

Host: Rabbit

Clonality: Polyclonal

Tested Applications: WB

Recommended dilutions: WB: 1/500 - 1/2000. Optimal dilutions/concentrations should be determined by the end user.

Immunogen: Recombinant protein of human RABEPK.

Purification: Affinity purified.

Form: Liquid

Isotype: IgG

Conjugation: Unconjugated

Storage: Aliquot and store at -20 °C. Avoid repeated freeze/thaw cycles.

Molecular Weight: Calculated MW: 34 kDa/40 kDa
Observed MW: 45 kDa

Swiss Prot: [Q7Z6M1](#)

GeneID: [10244](#)

Abbexa Ltd, Innovation Centre, Cambridge Science Park, Cambridge, CB4 0EY, UK
Telephone: +44 (0) 1223 755950 - Fax: +44 (0) 1223 755951 - E-Mail: info@abbexa.com

Gene Symbol: RABEPK

Concentration: > 1 mg/ml

Buffer: PBS, pH 7.3, 0.02% sodium azide, 50% glycerol.

Note: This product is for research use only.