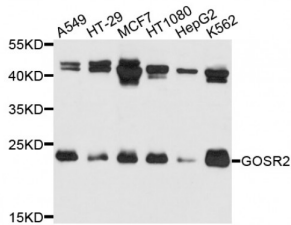


Golgi SNAP Receptor Complex Member 2 (GOSR2) Antibody

Catalogue No.: abx003212



Western blot analysis of extracts of various cell lines, using GOSR2 antibody (abx003212) at 1/1000 dilution.

GOSR2 Antibody is a Rabbit Polyclonal antibody against GOSR2. This gene encodes a trafficking membrane protein which transports proteins among the medial- and trans-Golgi compartments. Due to its chromosomal location and trafficking function, this gene may be involved in familial essential hypertension. Three transcript variants encoding three different isoforms have been found for this gene.

Target: Golgi SNAP Receptor Complex Member 2

Reactivity: Human

Host: Rabbit

Clonality: Polyclonal

Tested Applications: WB

Recommended dilutions: WB: 1/500 - 1/2000. Optimal dilutions/concentrations should be determined by the end user.

Immunogen: Recombinant protein of human GOSR2.

Purification: Affinity purified.

Form: Liquid

Isotype: IgG

Conjugation: Unconjugated

Storage: Aliquot and store at -20 °C. Avoid repeated freeze/thaw cycles.

Molecular Weight: Calculated MW: 22 kDa/24 kDa
Observed MW: 24 kDa

Swiss Prot: [O14653](#)

Abbexa Ltd, Innovation Centre, Cambridge Science Park, Cambridge, CB4 0EY, UK
Telephone: +44 (0) 1223 755950 - Fax: +44 (0) 1223 755951 - E-Mail: info@abbexa.com

GeneID: [9570](#)

Gene Symbol: GOSR2

Concentration: > 1 mg/ml

Buffer: PBS, pH 7.3, 0.02% sodium azide, 50% glycerol.

Note: This product is for research use only.