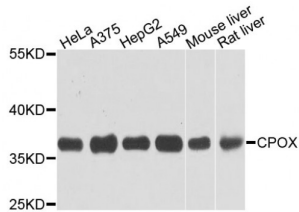


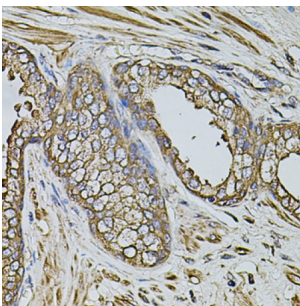
Abbexa Ltd, Innovation Centre, Cambridge Science Park, Cambridge, CB4 0EY, UK
 Telephone: +44 (0) 1223 755950 - Fax: +44 (0) 1223 755951 - E-Mail: info@abbexa.com

Coproporphyrinogen Oxidase (CPOX) Antibody

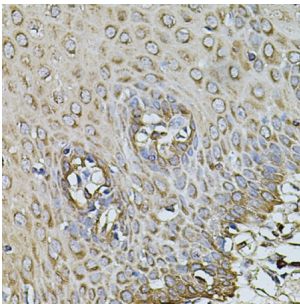
Catalogue No.: abx002758



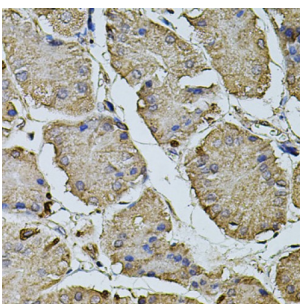
Western blot analysis of extracts of various cell lines, using CPOX antibody (abx002758) at 1/1000 dilution.



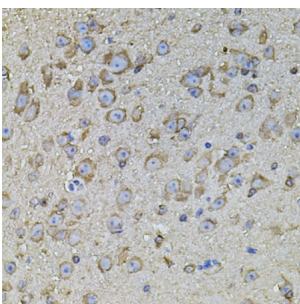
Immunohistochemistry of paraffin-embedded human prostate using CPOX antibody (abx002758) at dilution of 1/100 (40x lens).



Immunohistochemistry of paraffin-embedded human esophagus using CPOX antibody (abx002758) at dilution of 1/100 (40x lens).



Immunohistochemistry of paraffin-embedded human stomach using CPOX antibody (abx002758) at dilution of 1/100 (40x lens).



Immunohistochemistry of paraffin-embedded mouse brain using CPOX antibody (abx002758) at dilution of 1/100 (40x lens).

CPOX Antibody is a Rabbit Polyclonal antibody against CPOX. The protein encoded by this gene is the sixth enzyme of the

Abbexa Ltd, Innovation Centre, Cambridge Science Park, Cambridge, CB4 0EY, UK
Telephone: +44 (0) 1223 755950 - Fax: +44 (0) 1223 755951 - E-Mail: info@abbexa.com

heme biosynthetic pathway. The encoded enzyme is soluble and found in the intermembrane space of mitochondria. This enzyme catalyzes the stepwise oxidative decarboxylation of coproporphyrinogen III to protoporphyrinogen IX, a precursor of heme. Defects in this gene are a cause of hereditary coproporphyrria (HCP).

Target:	CPOX
Reactivity:	Human, Mouse, Rat
Host:	Rabbit
Clonality:	Polyclonal
Tested Applications:	WB, IHC
Recommended dilutions:	WB: 1/500 - 1/2000, IHC: 1/50 - 1/200. Optimal dilutions/concentrations should be determined by the end user.
Immunogen:	Recombinant protein of human CPOX.
Purification:	Affinity purified.
Form:	Liquid
Isotype:	IgG
Conjugation:	Unconjugated
Storage:	Aliquot and store at -20 °C. Avoid repeated freeze/thaw cycles.
Molecular Weight:	Calculated MW: 30 kDa/50 kDa Observed MW: 36 kDa
Swiss Prot:	P36551
GeneID:	1371
Gene Symbol:	CPOX
Concentration:	> 1 mg/ml
Buffer:	PBS, pH 7.3, 0.02% sodium azide, 50% glycerol.
Note:	This product is for research use only.