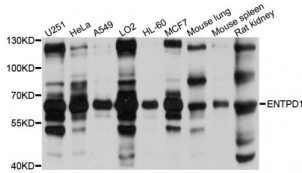


Abbexa Ltd, Innovation Centre, Cambridge Science Park, Cambridge, CB4 0EY, UK
 Telephone: +44 (0) 1223 755950 - Fax: +44 (0) 1223 755951 - E-Mail: info@abbexa.com

Ectonucleoside Triphosphate Diphosphohydrolase 1 (ENTPD1) Antibody

Catalogue No.: abx002729



Western blot analysis of extracts of various cell lines, using ENTPD1 antibody (abx002729) at 1/1000 dilution.

ENTPD1 Antibody is a Rabbit Polyclonal antibody against ENTPD1.

Target: ENTPD1

Reactivity: Human, Mouse, Rat

Host: Rabbit

Clonality: Polyclonal

Tested Applications: WB

Recommended dilutions: WB: 1/200 - 1/1000. Optimal dilutions/concentrations should be determined by the end user.

Immunogen: Recombinant protein of human ENTPD1.

Purification: Affinity purified.

Form: Liquid

Isotype: IgG

Conjugation: Unconjugated

Storage: Aliquot and store at -20 °C. Avoid repeated freeze/thaw cycles.

Molecular Weight: Calculated MW: 34 kDa/42 kDa/46 kDa/57 kDa/58 kDa/59 kDa
 Observed MW: 65 kDa

Swiss Prot: [P49961](#)

GeneID: [953](#)

Abbexa Ltd, Innovation Centre, Cambridge Science Park, Cambridge, CB4 0EY, UK
Telephone: +44 (0) 1223 755950 - Fax: +44 (0) 1223 755951 - E-Mail: info@abbexa.com

Gene Symbol: ENTPD1

Concentration: > 1 mg/ml

Buffer: PBS, pH 7.3, 0.02% sodium azide, 50% glycerol.

Note: This product is for research use only.