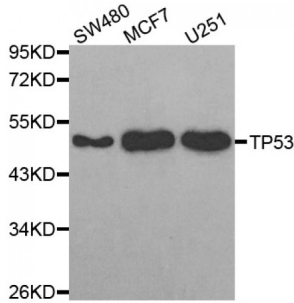


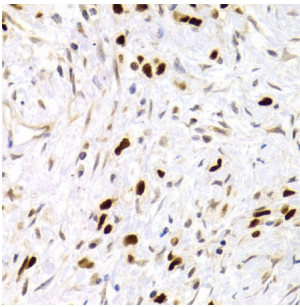
Abbexa Ltd, Innovation Centre, Cambridge Science Park, Cambridge, CB4 0EY, UK
Telephone: +44 (0) 1223 755950 - Fax: +44 (0) 1223 755951 - E-Mail: info@abbexa.com

Tumor Protein P53 (TP53) Antibody

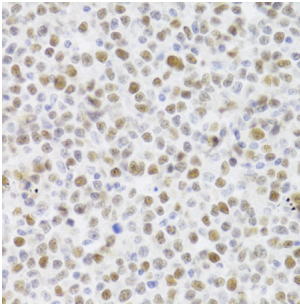
Catalogue No.: abx002285



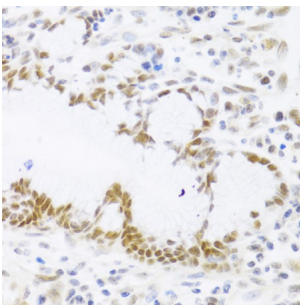
Western blot analysis of extracts of various cell lines, using TP53 antibody (abx002285) at 1:300 dilution.



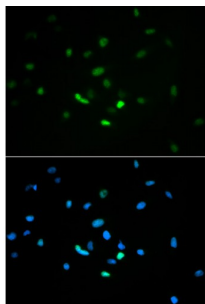
Immunohistochemistry of paraffin-embedded human gastric cancer using TP53 Antibody (abx002285) at dilution of 1/100 (40x lens).



Immunohistochemistry of paraffin-embedded human B cell lymphoma using TP53 Antibody (abx002285) at dilution of 1/100 (40x lens).



Immunohistochemistry of paraffin-embedded human gastric cancer using TP53 Antibody (abx002285) at dilution of 1/100 (40x lens).



Immunofluorescence analysis of MCF-7 cells using TP53 antibody (abx002285).

TP53 Antibody is a Rabbit Polyclonal antibody against TP53. This gene encodes tumor protein p53, which responds to diverse

Abbexa Ltd, Innovation Centre, Cambridge Science Park, Cambridge, CB4 0EY, UK
Telephone: +44 (0) 1223 755950 - Fax: +44 (0) 1223 755951 - E-Mail: info@abbexa.com

cellular stresses to regulate target genes that induce cell cycle arrest, apoptosis, senescence, DNA repair, or changes in metabolism. p53 protein is expressed at low level in normal cells and at a high level in a variety of transformed cell lines, where it's believed to contribute to transformation and malignancy. p53 is a DNA-binding protein containing transcription activation, DNA-binding, and oligomerization domains. It is postulated to bind to a p53-binding site and activate expression of downstream genes that inhibit growth and/or invasion, and thus function as a tumor suppressor. Mutants of p53 that frequently occur in a number of different human cancers fail to bind the consensus DNA binding site, and hence cause the loss of tumor suppressor activity.

Target:	TP53
Reactivity:	Human, Rat
Host:	Rabbit
Clonality:	Polyclonal
Tested Applications:	WB, IHC, IF/ICC
Recommended dilutions:	WB: 1/500 - 1/2000, IHC: 1/50 - 1/200, IF/ICC: 1/50 - 1/200. Optimal dilutions/concentrations should be determined by the end user.
Immunogen:	Recombinant protein of human TP53.
Purification:	Affinity purified.
Form:	Liquid
Isotype:	IgG
Conjugation:	Unconjugated
Storage:	Aliquot and store at -20 °C. Avoid repeated freeze/thaw cycles.
Molecular Weight:	Calculated MW: 23-43 kDa Observed MW: 53 kDa
Swiss Prot:	P04637
GeneID:	7157
Gene Symbol:	TP53
Concentration:	> 1 mg/ml
Buffer:	PBS, pH 7.3, 0.02% sodium azide, 50% glycerol.

Abbexa Ltd, Innovation Centre, Cambridge Science Park, Cambridge, CB4 0EY, UK
Telephone: +44 (0) 1223 755950 - Fax: +44 (0) 1223 755951 - E-Mail: info@abbexa.com

Note: This product is for research use only.