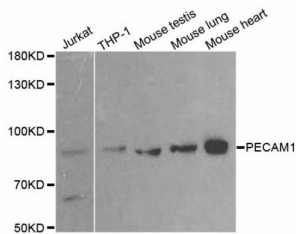


Platelet Endothelial Cell Adhesion Molecule (PECAM1) Antibody

Catalogue No.: abx002283



Western blot analysis of extracts of various cell lines, using PECAM1 antibody (abx002283) at 1/500 dilution.

PECAM1 Antibody is a Rabbit Polyclonal antibody against PECAM1. The protein encoded by this gene is found on the surface of platelets, monocytes, neutrophils, and some types of T-cells, and makes up a large portion of endothelial cell intercellular junctions. The encoded protein is a member of the immunoglobulin superfamily and is likely involved in leukocyte migration, angiogenesis, and integrin activation.

Target: PECAM1

Reactivity: Human, Mouse, Rat

Host: Rabbit

Clonality: Polyclonal

Tested Applications: WB, IF/ICC

Recommended dilutions: WB: 1/500 - 1/2000, IF/ICC: 1/50 - 1/200. Optimal dilutions/concentrations should be determined by the end user.

Immunogen: A synthetic peptide of human PECAM1.

Purification: Affinity purified.

Form: Liquid

Isotype: IgG

Conjugation: Unconjugated

Storage: Aliquot and store at -20 °C. Avoid repeated freeze/thaw cycles.

Molecular Weight: Calculated MW: 79 kDa/80 kDa/81 kDa/82 kDa
Observed MW: 85 kDa

Abbexa Ltd, Innovation Centre, Cambridge Science Park, Cambridge, CB4 0EY, UK
Telephone: +44 (0) 1223 755950 - Fax: +44 (0) 1223 755951 - E-Mail: info@abbexa.com

Swiss Prot: [P16284](#)

GeneID: [5175](#)

Gene Symbol: PECAM1

Concentration: > 1 mg/ml

Buffer: PBS, pH 7.3, 0.02% sodium azide, 50% glycerol.

Note: This product is for research use only.